

Classroom tech toolkit



about us

we make
collaboration
technology
work the way
you want it to.

QOMO is a leading US brand and global manufacturer of educational and collaboration technology.

We're the only partner with a full product offering for collaborative classrooms and conference rooms. After doing this for nearly 20 years, we understand how to work with everyone from CEOs and CTOs to district administrators and classroom teachers.

QOMO focuses on creating user-friendly technologies that allow everyone to enjoy what they do best.

SOMETIMES ONE IS THE LOVELIEST NUMBER

It's always easier dealing with fewer companies than many. Our products integrate with your existing technology to be easy to use and easy on the budget.

THE RIGHT SIZE TO BE BOTH RELATABLE AND RELIABLE

From Sales to Support, you'll never be treated as anything less than an actual human being. We're the right size to take care of you the right way, right away.



k12

Teach your students in a way they understand,
with easy-to-use classroom technology.

NO TECH FOR TECH'S SAKE

Our team develops devices that enrich learning and enhance communication with your students, instead of distracting from your classroom goals. We understand that technology isn't the be-all-end-all of education, but a facilitator for human connection.

SIMPLY GOOD GEAR

We balance an abundance of useful features with ease of use to reduce the learning curve as much as possible. QOMO manufactures educational technology with the specific needs of teachers in mind. We're always seeking your feedback to add more shortcuts, optimize your time, and make it simpler for you to hit the ground running.

SUPPORT THAT'S ACTUALLY SUPPORTIVE

Your relationship with QOMO doesn't end after you make a purchase. We're as invested in the end-result of using our products as you are. Whether you need technical support or emotional support, we're here for you when you call (or email)!

AFFORDABLE AND ADAPTABLE

We know the best way to save you money is to provide educational technology that works with whatever you already have. Our products are flexible, customizable, and come with preloaded software so you can use them right out of the box. They'll work with nearly any mobile device, application, or IT infrastructure already in use.



higher ed

Collaboration technology that takes
lectures from passive to interactive.

ACTIVATE YOUR CLASS

QOMO creates educational technology that establishes the best conditions for interactive learning, turning lectures into conversations. Our devices encourage students to actively engage, and make it easier for instructors to present and share information.

BIG IDEAS WITH A BIGGER IMPACT

Go beyond the humble blackboard and reach the entire lecture hall with crystal clear visuals and amplified audio. Add new dimensions to your lectures with instant access to digital content, an audience response system, and wireless screencasting.

TEACH MORE EFFECTIVELY

QOMO's educational technology helps you hold attention, gauge comprehension, and conserve your time and energy.

LESS TROUBLE AND LESS TROUBLESHOOTING

Sometimes simpler is smarter. QOMO's technology integrates with your existing software, and it's designed to be easy to use, so you'll need fewer visits from IT. When you do get stuck, we're here to help.

INTERACTIVE PANEL

QOMO's Journey™ 14 series is a sleek and fast interactive panel with an Android operating system and 32 GB of storage.

It's as easy to use as a smartphone or tablet, and designed for teamwork, with up to **20 multi-touch points, annotation capabilities**, and the **ability to cast up to 4 devices**.

✓ What Sets the Journey 14 Series Apart

CUSTOM-DESIGNED INTERFACE

Specifically designed to be **intuitive for the end-user**. Access what you need directly from the home screen.

GRADE A LG LCD SCREEN

The Journey 14 uses **Grade A LG LCD for superior image quality**. An LCD screen built to use and built to last.

STORAGE POWERHOUSE

Built with **2 to 4 times the memory** of any other panel, with **32GB ROM**.

MULTI-USER DEVICE CASTING

Cast between 1 and 4 devices from different platforms with built-in wireless screen sharing.

QConnect Wireless Sharing

The QConnect works with all devices—iOS, Android, Chrome, Windows, and Mac. This powerful system can recognize up to **64 device connections at a time with admin controls**.

		55'	65'	75'	86'
Journey 14 Series					
Backlight	DLED	●	●	●	●
Aspect Ratio	16:9	●	●	●	●
Resolution	4K	●	●	●	●
Brightness	350cd/m2	●	●	●	●
Contrast	1200:1	●	●	●	●
Viewing Angle	178(H)/178(V)	●	●	●	●
Response Time	8ms	●	●	●	●
Operating System	Android OS	●	●	●	●
PC	Optional Built-In	●	●	●	●
Audio					
Speaker Position	Front-Facing	●	●	●	●
Speaker Output	2X15W	●	●	●	●
Power					
Working Voltage	100-240V, 50/60Hz	●	●	●	●
Power Consumption	≤ 290W <0.5W (stand-by)	●	●	●	●
Physical Specs					
VESA		400×300	600×400	600×400	800×400
Dimensions	L×W×D	1294×827×97mm	1540×939×97mm	1730×1068×117mm	1976×1206×117mm
Packing Dimensions	L×W×H	1415×940×220mm	1621×1060×220mm	1848×1188×220mm	2097×1320×220mm
Net Weight		90lbs	112lbs	136lbs	176lbs
Gross Weight		112lbs	136lbs	176lbs	222lbs

Accessories Included	1 remote control, 2 magnetic pens, 1 pointer, 1 power cable, 1 HDMI cable, 1 USB cable (A-B), 1 bracket, 1 WIFI antenna, 1 warranty card, 1 CD
----------------------	--

INTERACTIVE PANEL

software

QOMO panels come with software at no additional costs or hidden fees. Our panels also work with software you're already using.

Our products adapt to software you're already using!



Flow!Works Pro by QOMO
Included with purchase of Journey 14 products
QOMO's Flow!Works Pro is an interactive whiteboarding and annotation software. Communicate ideas easily with digital tools, such as rulers and a calculator.



Oktopus by our partners at Qwizdom
Included with purchase of Journey 14 products
Oktopus is a robust educational software with pre-made lesson plans, collaboration tools, and interactive multi-player games. Available in over 40 languages.



Ximbus by our partners at Qwizdom
Included with purchase of Journey 14 products
Ximbus allows users to create lesson plans with Google Classroom. Drag and drop videos, images, PDFs, and PPTs directly from your Google Drive, and present live to your Google Class.

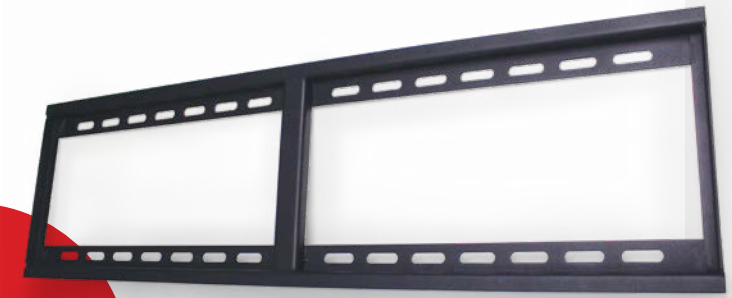
INTERACTIVE PANEL

mounts & stands

QOMO offers height-adjustable, mobile, and even motorized mounts and stands for the Journey 14 and other interactive displays.

Standard VESA Mount

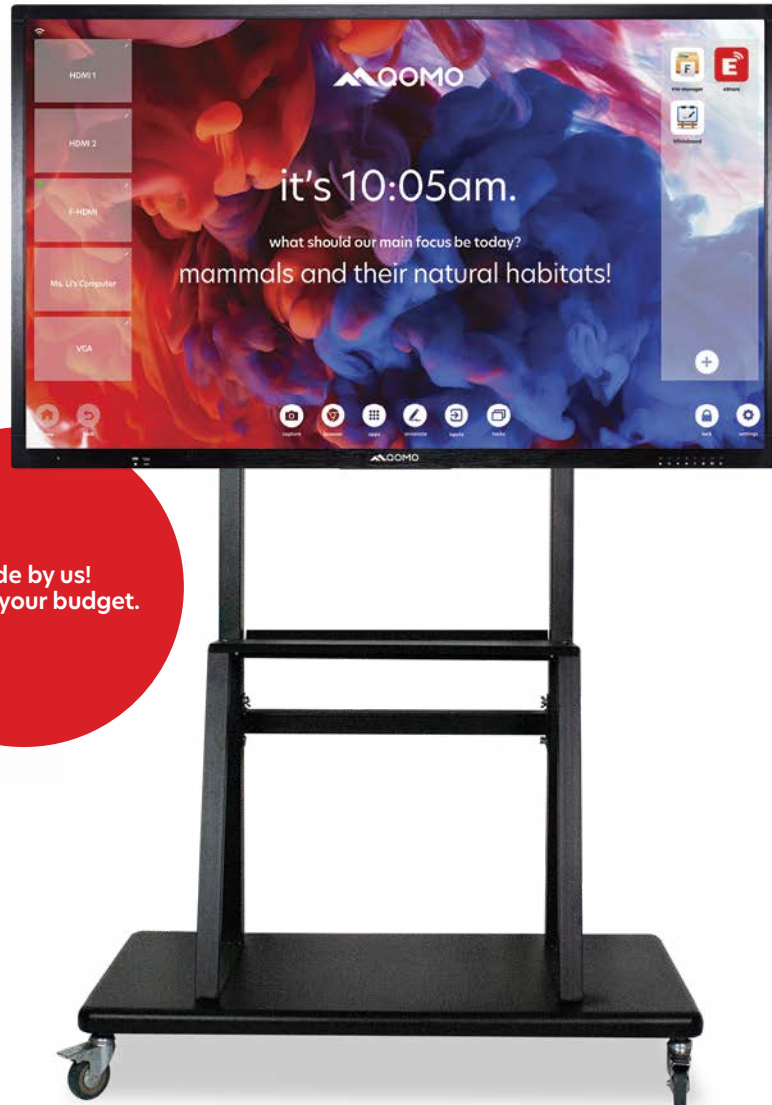
Our fixed wall mount comes with the Journey 14 Series and **holds up to 300 pounds**, which is a lot of weight!



This mount is included with QOMO panels!



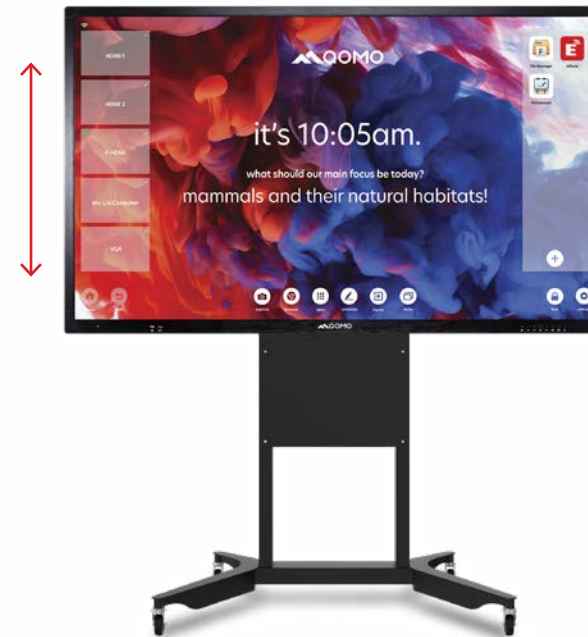
Made by us!
Easy on your budget.



Fixed Mobile Stand

We designed this **mobile stand to be easy on your budget** and perfect for your QOMO panel or any non-QOMO panel. It comes with a convenient shelf for your computer and a rectangular gear base to prevent tripping.

A PROUD PARTNER OF
BalanceBox®



BalanceBox® stands are UL Certified!



Height Adjustable Mobile Stand

The new **BalanceBox® 400** is a height adjustable stand for education. It has a patented spring system that neutralizes gravity, making it easy and safe to move your display up or down and allowing users of all ages and heights to access the screen.

Motorized Stands

The **e-Box®** is a product range of high quality motorized display panel mounts. Make height adjustments to your display panel or tilt it back up to 90 degrees for a completely flat work surface with the push of a button.

A man with short, curly hair, wearing a blue button-down shirt, is shown from the side, gesturing with his hands as he presents to a class. The background is a lecture hall with red walls and rows of students seated at desks. The lighting is warm, with red ambient light and some blue highlights on the presenter.

podiums

stay engaged
while controlling
your presentation.

**Control multiple displays without ever
having to turn your back on the room.**

An interactive podium allows you to maintain eye contact with your class, and the energy of your presentation, while giving you complete control over what's happening on the screen behind you. A podium can output your presentation to any display screen, including an interactive panel or projector.

MAKE YOUR MARK

With annotation software, you can use your interactive podium to write, draw, or annotate over anything you display to your audience. You can circle and draw arrows to point out important details in a video or photo, highlight passages of a text, or complete a math problem along with your algebra class (and save your work to share online with your students).

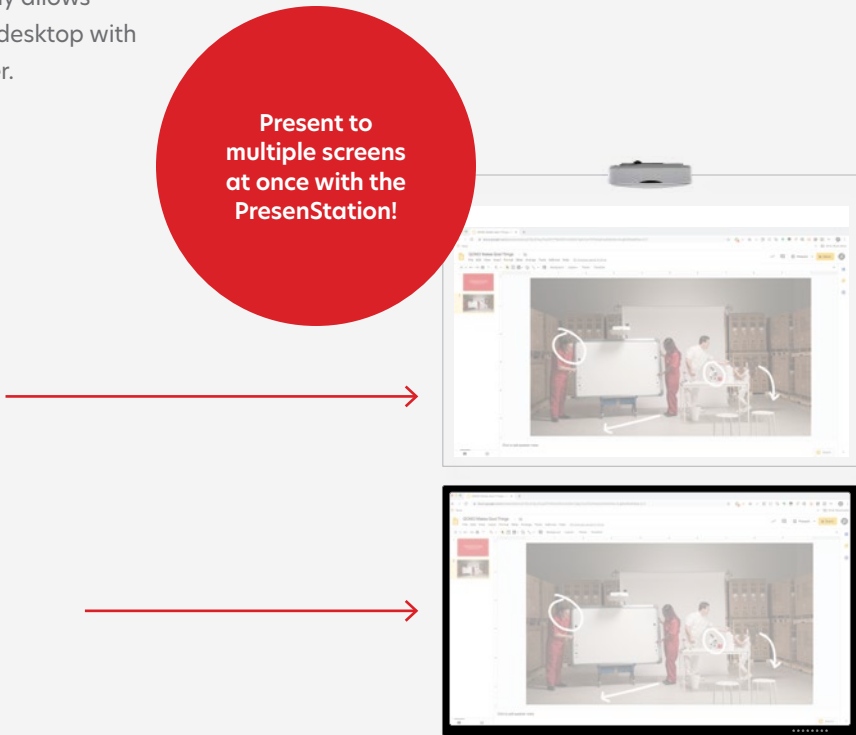
VERSATILE AND ERGONOMIC

On a desktop, it can be used as a writing tablet or an interactive computer monitor. With electromagnetic touch (EM) capabilities, you can write on the interactive podium with a stylus and rest your hands comfortably on the screen without interference.

INTERACTIVE PODIUM

The PresenStation™ 600f2 interactive podium gives you complete control over your presentation without having to turn your back on your class.

This bright and incredibly responsive display allows you to **write, draw, and annotate** on your desktop with a touch pen that simulates writing on paper.



✔ What Sets the PresenStation 600f2 Apart

MULTIPLE CONNECTION PORTS

Designed as a presentation tool, we added **2 HDMI outputs for simultaneous projecting, and 2 USB extenders.** Control presentations across multiple screens without turning your back.

UNIVERSAL VESA MOUNT

An adjustable tabletop mount is included, but the back of the PresenStation has a **standard VESA pattern**, so use whatever mount you like. Even one that rotates.

PRESSURE SENSITIVE TOUCH

EM technology allows you to draw heavy or faint lines like you would with an actual pen on paper. Point-by-point touch allows for more precise pen touch without palm interference.

ENHANCE YOUR INTERACTION

Write, draw, and annotate on your desktop with software included. The PresenStation works with Mac, Windows, and Chrome OS.

PresenStation 600f2

Panel Type	Active-Matrix Liquid Crystal Display (TFT)
Effective Screen Size	21.5 inch 478.64(H) × 270.11(V)
Resolution	1920(H) × 1080 (V)
Standard Colors	16.7M
Brightness	250 cd/m2
Contrast	5000:1
Viewing Angle	178° (H), 178° (V)

Writing Characteristics

Touch Technology	Electromagnetic
Pen	Battery Pen
Tablet Resolution	2000Lpi
Pen Pressure	1024 Levels
Reading Accuracy	±0.5 mm (center)
Tracking	Approximately 180 points per second
Interface	USB interface (USB3.0)

Ports

Inputs	HDMI, USB Type A (3.0) x 2, USB Type B (3.0), 12v DC Power
Outputs	HDMI × 2

SPECS FOR USB 3.0

Physical Specs

External Dimensions	517.8 (W)×323.76 (H)×38.34 (D) mm (without stand)
---------------------	---

Stand Adjustment	Adjustable in the range of 12° to 130°
------------------	--

Compatible Operating Systems	Windows XP, Windows 7, Windows 8, Windows 10, Mac 10.9 or above or Chrome OS.
------------------------------	---



doc cams

share the delight
that's in the details.

**Give a close-up view of small objects
and documents to an entire classroom.**

Just one document camera can **save you from making thousands of paper copies per year**, and can also save you money on textbooks and other class materials.

ZOOM IN ON OBJECTS AND SPECIMENS

You can demonstrate everything from how a circuit board works to how to sew on a button using a document camera. Some doc cams even connect to microscopes, so you can show your class real-time videos or still photos of specimens and lead a discussion about your observations. Document cameras are perfect for literary analysis, with annotation software that allows you to highlight book passages and write notes directly on the text.

RECORD AND SHARE LESSONS

Document cameras that can record audio and video enables you to save, replay, and share a demonstration or even an entire lecture online. This sanity-saving tool can not only help you conserve your energy throughout the school day—it can also transform the way you teach online, and help absent students catch up.

WIRELESS DOC CAM

TM

The WanderCam™ 25w is a completely portable wireless document camera available at a highly affordable price point.

Share and save high resolution photos and videos instantly from anywhere in the classroom.

The lightest weight and longest range wireless doc cam available!

✓ What Sets the WanderCam 25w Apart

PORTABLE AND WELL-CONSTRUCTED

It's **sturdy and parallel with tabletops** for viewing objects straight on. It's also **light and portable** enough to be put in a bag or pocket and shared across classrooms.

LONG-LASTING BATTERY LIFE

A wireless doc cam with **7 hours of battery life**. No worries about the doc cam dying right in the middle of what you're doing. At the end of the day, just plug it in to recharge.

WIRELESS CONNECTION

The WanderCam uses wifi technology, so it can be carried anywhere in the classroom and capture images **with up to 165 feet of wifi range**.

EASY ON YOUR BUDGET

The WanderCam is available at the **best price for the longest range and lightest weight** camera on the market.

WanderCam 25w

Wireless Connection	WIFI-300M/S, USB dongle
Sensor	CMOS
Camera Rotation	270 degrees
Digital Zoom	16x
Video Resolution	720p, 1080p
Image Resolution	5MP
File Format	JPG, BMP, PNG, GIF, and TIF for pictures; PDF, DOC, TXT, RTF, XLS for files; FLV, MP4, AVI for video
Shooting Area	A4
Frame Rate	30 fps
Operating Systems	Windows
Warranty	2 years

Physical Specs

Weight	1.3 lbs
Operating Dimensions	13 in × 2.5 in × 1.75 in (folded), 13 in × 7.5 in × 1.75 in (un-folded)
Accessories Included	1 aluminum base, 1 USB wireless LAN, 1 CD, 1 USB cable, 1 product manual, Certification

10 Ways to Use Document Cameras in the Classroom

The greatest benefit of document cameras is the ability to give a close-up view of small objects and documents to an entire classroom. A single doc cam can save thousands of pages of paper in a year (no need to make copies for every student!) and can even help you save money on textbooks and other class materials.

Here are 10 thoughtful ways to apply document cameras in your classroom.

1. Zoom in on objects and specimens.

2. Read between the lines.

3. Record and share lessons.

4. Get students involved.

5. Host interesting visitors.
6. Help note takers catch up.

7. Manage your classroom.

8. Enhance demonstrations.

9. Make time to play.

10. Replace your scanner.

DESKTOP DOC CAM

TM

The CenterCam™ 3900h1 is a smart document camera and media center all-in-one.

Text optimization and backlighting make documents and books even easier to read from a distance.

✓ What Sets the CenterCam 3900h1 Apart

BUILT-IN MEMORY STORAGE

With **storage built in directly** to the camera, you can **capture images** and **record videos to play back** anytime.

USER-FRIENDLY INSTRUCTIONS

The CenterCam has a **user-friendly guide printed on the camera itself**, making it super easy to use for anyone. This is great for first-time users and public spaces.

BUILT-IN WHITEBOARD AND ANNOTATION

The only flatbed doc cam on the market with **built-in whiteboard and annotation capabilities**. Write over anything without needing a computer.

BACKLIT STAGE WITH LED LAMPS

One of the only flatbed doc cams to have a **backlit A4 viewing stage with 2 LED lamps**. Our large lamps provide evenly dispersed lighting without hot spots for better image viewing.

CenterCam 3900h1

Image	5 MP CMOS
Shooting Area	380mm × 285mm Max
Optical Zoom	10X
Digital Zoom	12X
Video Resolution	XGA: 1024*768; SXGA: 1280*1024; 1080P: 1920*1080; 720P: 1280*720
Frame Rate	30fps
Image Rotation	0°/90°/180°/270°
White Balance	Auto
Image Split	Yes
Negative/positive conversion	Yes
Image Freeze	Yes
Mirror	Yes
Remote Control	Yes

Ports

Inputs	RGB DB15FLC (2); PC Audio (2); HDMI (1); USB TYPE A for mouse control; MIC (built in) (1)
Outputs	RGB DB15FLC (2); HDMI (1); Audio OUT (Mini Jack) (1)
USB (UVC)	Yes
Video Output	Yes

Storage

Onboard Memory	MASS
SD Card Slot	Yes (SD card not included)

Physical Specs

Dimensions Folded	20" × 16" × 4.5" (508 × 406 × 114mm)
Dimensions Set Up	20" × 21" × 22.5" (508 × 533 × 571mm)
Weight	12 lbs (5.5 kg)

ADDITIONAL MODELS

QOMO offers doc cams that flex, scan, clamp to your desk, and even fit in your pocket, so you can choose the camera that meets your specific classroom requirements.

QPC80H2

Gooseneck Document Camera

5 MegaPixels | 6x Optical Zoom | 10x Digital Zoom
Twist, bend, and stretch the arm of the QPC80 H2 to view an object from any angle, from microchips to microscope samples.

QPC20F1

Scanner Document Camera

8 MegaPixels | 16x Digital Zoom
The QPC20 F1 is a high quality, affordable, and ultra-portable doc cam that doubles as a document scanner and webcam.

QD4000

Flatbed Document Camera

13 MegaPixels | 22x Optical Zoom | 8x Digital Zoom
The QD4000 is a smart doc cam and media center all in one. Easily read the smallest words from the greatest distance with this text-optimizing document camera.

QPC35

Caterpillar Document Camera

5 MegaPixels | 14x Flexible Zoom (adjustable arm)
The QPC35 Caterpillar Camera clamps sturdily to your desktop, occupying virtually no desk space. Rotate the document camera up, down, and side-to-side with the long-reaching arm.

Comes with an LCD preview screen to quickly adjust placement!

The doc cam with the smallest footprint!

ADAPTABLE EDUCATION TECH

all-in-one classroom solutions



INTERACTIVE WHITEBOARD

Paired with a projector, this classic is a simple, durable, and powerful collaboration tool, and a major upgrade over a traditional dry-erase whiteboard.

QWB300 BW

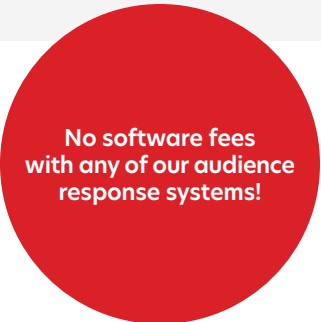
Interactive Whiteboard

Experience fast **10-point multi-touch interaction** on a durable steel whiteboard surface, all while saving money. No software licensing fees, and lower total solutions cost guaranteed.



ACCESSORIES

A classroom response system can help you instantly gauge whether your students are comprehending the material, without having to single anyone out.



AUDIENCE RESPONSE SYSTEM

QClick QRF300

The QRF300 is **cost-effective and simple, with multiple-choice selections**. Get 100% student engagement every time with a variety of quiz and poll formats, then manage and visualize gathered data by converting information to Powerpoint slides with the click of a button.

AUDIENCE RESPONSE SYSTEM

QClick QRF500

The QRF500 will help you get more comprehensive feedback with **keypad and short-answer functions**. Receive student feedback from up to 400 different pocket-sized devices. The teacher clicker doubles as a presentation remote that includes mouse control.





support & resources

supporting Customers
from Qoast to Qoast.

From tech to sales support,
and sometimes emotional support.

SALES TEAM
sales@qomo.com

TECH SUPPORT
support@qomo.com

ready to schedule
an online demo?

want to purchase
a QOMO product?

we make collaboration technology work the way you want it to.

QOMO is a leading US brand and global manufacturer of educational and collaboration technology. From doc cams to interactive touch screens, we're the only partner who comes with a fully-integrated (and adaptable) product line that's easy to use and easy on the budget. After doing this for nearly 20 years, we understand how to work with everyone from CEOs and CTOs to district administrators and classroom teachers.

QOMO focuses on creating user-friendly technologies that allow everyone to enjoy what they do best.

How do you say our name?

QOMO [co-moe]

hello@qomo.com

866-990-7666

46950 Magellan

Wixom, MI 48393