

QIT600 F1 Interactive LCD Panel

Ergonomic Widescreen Writing Monitor

21.5"

HDMI
1080p

Angle
Adjust

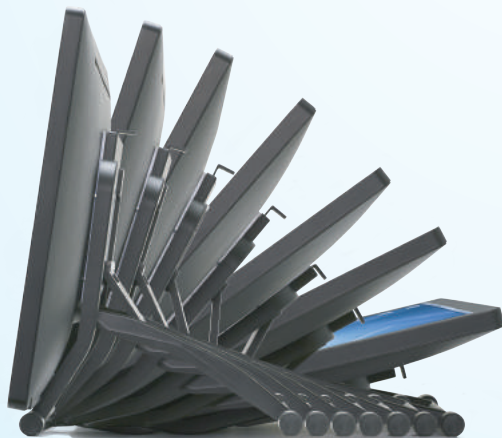
Pen
Annotation



DESKTOP CONTROL

The QIT600 F1 Widescreen Interactive Monitor allows you to enhance learning and presentations at ease.

The QIT600 F1 doubles on your desktop as both an interactive student learning device and a powerful presentation tool. The panel gives presenters full control of their displayed screen with smooth, ultra-fast annotation response time and comfortable simulated hand-writing.



MULTIPLE ANGLES

For the comfort of the user, the QIT600 F1 easily adjusts to any angle between 0° and 90°.

QIT600 F1 Interactive LCD Panel

Ergonomic Widescreen Writing Monitor

EASY HAND-WRITING

- Write clearly using the handwriting recognition tool, or select the on-screen keyboard to type.
- Interactive pen allows users to write comfortably and without interference.



TECHNICAL DRAWING

- Drawing is intuitive and smooth, allowing for more efficient design and engineering.
- Realize ideas quickly with ultra-fast on-screen response time.



EASE-OF-USE

- The screen can be used upright or horizontally, and any angle in between.
- Lines and notes can be marked directly and quickly on documents.

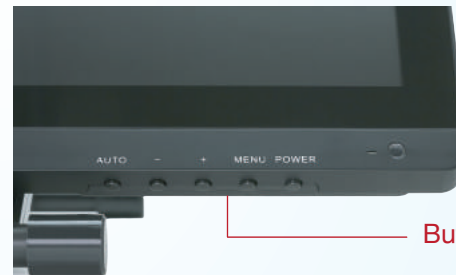


MULTI-PURPOSE

- Use as a learning tool for interactive vibrant displays conveniently at your desk.
- Have full-control of presentations with a live displays at your desktop or podium.



QIT600 F1	
Technology	Electromagnetic
Dimensions	578mm x 323mm x 28mm
Weight	5 (kg)
Display	LCD
Display Area	476.64mm x 268.11mm (WxH)
Resolution	1920 x 1080
Response Time	5ms
Pixel Pitch	0.24825 x 0.24825mm
Pressure Sensitivity	2048 levels
Maximum Induction Angle	50° (angle between normal display)
Support Color	16.7M
Contrast Ratio	1000:1 (typical)
Stents Angle Adjustable	Tilt angle: 5° ~ 85° (Stents removable)
Brightness	250 (cd/m2) (typical)
Viewing Angle	Level 170°, vertical 160°
Environmental	Operating temperature: 0°~40°, 20~80%RH (non-condensing); Storage temperature: -15~60°C, 10-90%RH
Operating System Support	Windows 8/7/Vista/XP, MAC OS
Handwriting Software Support	Windows Tablet PC Components group, MSN, Outlook Express Office 2007, a variety of professional handwriting, hand painted application software, etc



Button Navigation

CD	Drive CD
Accuracy	Center ± 0.5mm, the maximum deviation ± 3mm
Sensing Height	Not less than 5mm, the maximum deviation ± 3mm
Data Interface	USB Interface; HDMI
Data Report Rate	138 pps (points/sec)
Handwriting Pen Suit	Handwriting Pen Suit includes: handwriting pen (dry battery), handwriting pen charger (optional), spare tip, tip clip
Power Adapter	External power adapter (input 100-240VAC, 50/60Hz, output 12VDC 4A)
Power Line	1.5 AC power line



866-990-QOMO info@qomo.com www.qomo.com



Copyright©2016 Qomo, LLC. All rights reserved. This document may not be copied in any form without the permission from Qomo, LLC. Information in this document is subject to change without notice.

Version 2
3/2016