



# Wireless Tablet

Hardware Quick Start Guide







## The R&TTE Directive






We, the manufacturer hereby declare that this equipment, model RCK-T07 is in compliance with the essential requirements and other relevant provisions of Directive 1995/5/EC.



## FEDERAL COMMUNICATIONS COMMISSION INTERFERENCE STATEMENT

This equipment has been tested and found to comply with the limits for a Class B digital device, pursuant to part 15 of the FCC Rules. These limits are designed to provide reasonable protection against harmful interference in a residential installation. This equipment generates, uses and can radiate radio frequency energy and, if not installed and used in accordance with the instructions, may cause harmful interference to radio communications. However, there is no guarantee that interference will not occur in a particular installation. If this equipment does cause harmful interference to radio or television reception, which can be determined by turning the equipment off and on, the user is encouraged to try to correct the interference by one or more of the following measures:



- 
- 
- Reorient or relocate the receiving antenna.
  - Increase the separation between the equipment and receiver.
  - Connect the equipment into an outlet on a circuit different from that to which the receiver is connected.
  - Consult the dealer or an experienced radio/ TV technician for help.

**CAUTION:**

Any changes or modifications not expressly approved by the grantee of this device could void the user's authority to operate the equipment.




## RF exposure warning



The equipment complies with FCC RF exposure limits set forth for an uncontrolled environment.

The equipment must not be co-located or operating in conjunction with any other antenna or transmitter.





Congratulation on purchase of Wireless Tablet

Wireless Tablet is a 2.4 G wireless solution table. Without complicated wireless software installation, just install tablet driver and plug our wireless receiver dongle to your PC and you use it freely any where. Moreover, Wireless tablet support Windows OS.

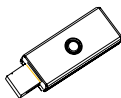
## 1. Package content



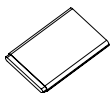
▲ Tablet \*1



▲ Pen\*1



▲ Receiver dongle\*1



▲ Li-ion battery\*1



▲ pen tip\*2



▲ Pen tweezers\*1

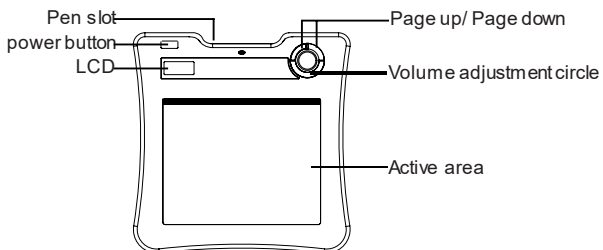


## 2. Hardware introduce

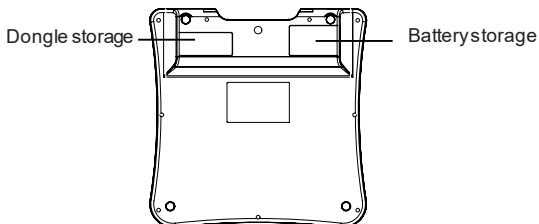
### Tablet:

English

#### Front side

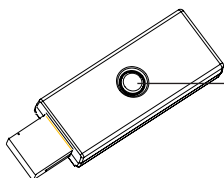


#### Backside





## Receiver Dongle

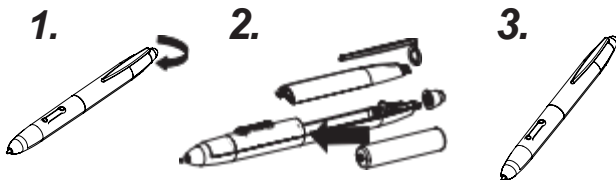


- Binding button
- LED

English

## Pen

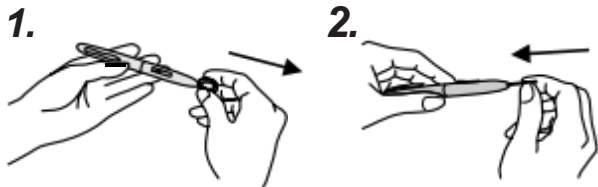
### How to change battery






## How to change pen tip


English





## 3. LCD introduce



 Power on: After press the power button 3 seconds, this icon is showed.

 Battery Indicator : There are four levels battery indicator.

 Active: Tablet will get into power saving mode if the pen is off the active area 3 seconds later and this icon will be hidden.

 Connecting: After you bind successful, the icon is showed. It means that your Tablet have connected to PC successful.

 Token right: It means that your tablet is authorized by the receiver dongle to send the package.







The interaction between pen and tablet:

- Blanking: Pen gets in to the detectable active area.
- Still: Pen tip on the active area.

↔ Volume adjustment indicator : you can use the pen on the volume adjustment circle to adjust the volume.

- → Clockwise: adjust volume louder
- ← Anticlockwise: adjust volume down

00 ! Tablet number: Once the dongle and the tablet are binding on each other, Tablet number will be showed as “001” on the Display.

## 4. Installation

- Wireless Tablet is a Windows plug and Play device. You can use the basic tablet function without installing any driver, just plug-n-play. Use the Page up/Page down and volume adjustment circle to effectively present
- Download FlowWorks Pro Software for whiteboarding and annotation: [https://qomo.com/download/flowworks\\_pro/](https://qomo.com/download/flowworks_pro/)

## 5. Start Use

1. Plug receiver dongle to your PC
2. Press at least 3 seconds to power on Wireless Tablet
3. Press the button on the backside of the tablet and button of the receiver dongle at the same time to pair.
4. The LCD of Tablet will blink and the blue LED of receiver dongle will blink also.
5. Once the pairing is successful, the number on the LCD will display 001.
6. The pen may go into power saving mode so tap the pen on the active area of the tablet to wake it up.

## 6. Specification

Solution	Wireless 2.4G RF
Dimension	278*282*20mm
active area	7.84"*5.92"
Resolution	2000lpi
Report rate	120 rpst
Pen pressure	1024 levels
Hot key	Page up / page down
LCD type	TN LCD
LCD size	17.7*40.9mm
LCD Icon content	battery status – 4 levels; charged; / connection mode ; connection power status/ volume status /Tablet number
Battery type	Nokia BL5C Li-ion rechargeable battery
battery capacity	800mA
battery life	16 hrs
power source	USB charged
power button	electrical power button
power consumption	max 50 mA( operation mode )
Receiver dongle	Yes