



# **Wireless Presentation System**

**User's Manual**

For QConnect-1700

(Nov 2017)

Version: 1.0








## Table of Contents



1	Overview.....	3
2	Package Contents .....	5
3	USB Token Contents.....	5
4	Physical Details .....	6
5	What You Might Need .....	7
6	Quick Installation .....	7
7	Start/Standby Screen of the Projector/Display .....	8
7.1	Quick Guide .....	8
7.2	“Conference Control” Mode.....	9
7.3	User-List .....	9
7.4	Setup (Make PnS Token) .....	9
7.5	Screen Saver .....	10
8	Web Management.....	10
8.1	Home Page.....	10
8.2	Download.....	11
8.3	Conference Control.....	12
8.4	WebSlides .....	13
8.5	Admin.....	13
8.5.1	System Status .....	14
8.5.2	Device Setup .....	15
8.5.3	Network Setup .....	16
8.5.4	OSD Setup .....	19
8.5.5	Change Passwords.....	20
8.5.6	Reset to Default .....	21
8.5.7	Firmware Upgrade .....	22
8.5.8	WebSlides Setup .....	23
8.5.9	Reboot System .....	24
8.5.10	Logout .....	25
9	Using MirrorOp (Sender) to Start Projection .....	25
9.1	Start the MirrorOp application .....	25
9.2	Main User Interface of MirrorOp (Sender) .....	28
9.3	A Complete User’s Guide on MirrorOp (Sender) .....	28
10	Launch “MirrorOp Receiver” (the SidePad Function) .....	29
11	Launch WebSlides .....	35
12	Wall-Mount Kit.....	38

# 1 Overview

QConnect-1700 is a professional wireless presentation gateway. With the revolutionary “interactive” and “wireless” features, QConnect-1700 enables users to deliver presentations wirelessly from a PC, Mac, iPad, iPhone or any Android device to a projector. QConnect-1700 also allows the presenter to use a tablet/smartphone to remotely control his/her PC/Mac during a presentation. Moreover, QConnect-1700 enables the audience (multiple login devices) to view the projecting slides and save them for note-taking later!

## QConnect-1700 Feature Highlights:

Icon	Feature	Description
	<b>MirrorOp (Sender)</b>	MirrorOp Sender for Windows and Mac <ul style="list-style-type: none"><li>◆ Win: 7/8/10</li><li>◆ Mac: 10.9 and above</li></ul>
	<b>MirrorOp Sender for Galaxy</b>	Users can project any content from their Samsung Galaxy devices.
	<b>MirrorOp Presenter</b>	High-quality presentation (Word, Excel, PPT, PDF, Photo, Screenshot) via Android and iOS devices.
	<b>MirrorOp Receiver (the SidePad Function)</b>	Control the projecting PC or Mac via iPhone, iPad or Android devices
	<b>WebSlides</b>	Broadcast slides to the audience (multiple login devices) via WiFi and web browser.  Audience can save the projecting slides for taking notes. <ul style="list-style-type: none"><li>◆ Access to WebSlides can be secured with a password.</li></ul>
	<b>Quad-Screen Mode (4-to-1 Split Screen)</b>	Project four PC/Mac/smartphone/tablet screens to one projector/display simultaneously.
	<b>Conference Control/ OSD User-List</b>	Select which user to project from the web page, or use the mouse to select a user from the standby screen. <ul style="list-style-type: none"><li>◆ The conference-control function can be secured</li></ul>

		with a password
		<ul style="list-style-type: none"> <li>◆ The moderator can control who is projecting.</li> <li>◆ The moderator can compare up to four documents/photos/videos side by side on the same screen.</li> </ul>
	<b>SNMPv2</b>	Manage (QConnect-1700) devices across the corporate network through SNMPv2.
	<b>Plug &amp; Show USB Token</b>	No software installation is required. Just plug the accompanied USB drive (token) into your PC/Mac, and a presentation can be started in seconds.

## Basic Features

- WiFi 802.11 b/g/n (5G/2.4G dual-band WiFi)
- Wireless screen/audio projection
- Remote desktop control
- Support Windows 7 / 8 / 10
- Support Mac OS 10.9 and above
- High-speed projection (up to 30 fps)
- Support up to 64 concurrent login users
- MSI installer for Windows
- Extended desktop support for both Windows and Mac
- Support enterprise WiFi encryption
- Provide session security login, wireless WEP/WPA AES/WPA2 AES/EPA TKIP/WPA2 TKIP key, and gatekeeper functions to protect presentation contents and maintain office network security
- Web management (including the software download and device settings)
- VGA/HDMI video output
- Support the AP/AP-Client mode

## 2 Package Contents

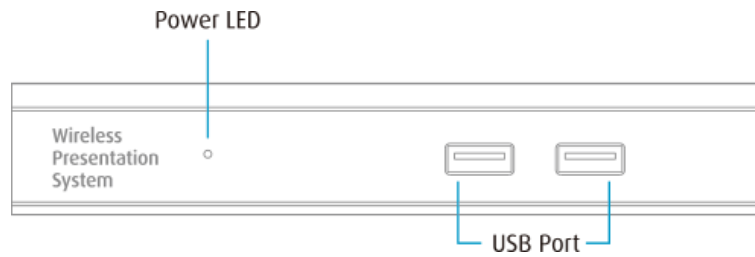
- QConnect-1700 Box
- USB Token
- Power Adapter (DC +5V, 2.6A)
- WiFi Antenna x 2
- Wall-Mount Kit
- Quick Installation Guide
- Warranty Card
- CE DoC

## 3 USB Token Contents

- MirrorOp Installer for Windows
- MirrorOp Installer for Mac
- Executable MirrorOp Application for Windows
- Executable MirrorOp Application for Mac
- SVS Driver (For Mac Extended Screen)
- SNMP MIB File
- User Manual

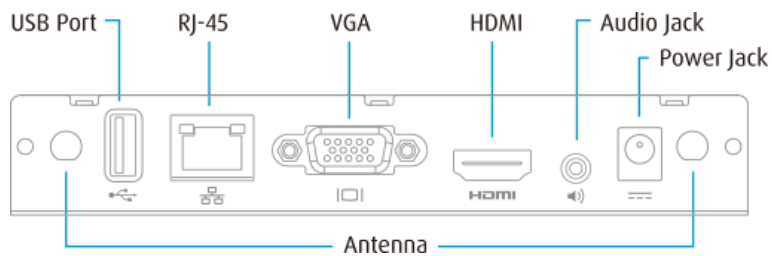
# 4 Physical Details

- Front Panel



<b>Power LED</b>	LED indicator: system loading (red), ready (green)
<b>USB Port (Front)</b>	2 USB ports for USB mouse and keyboard

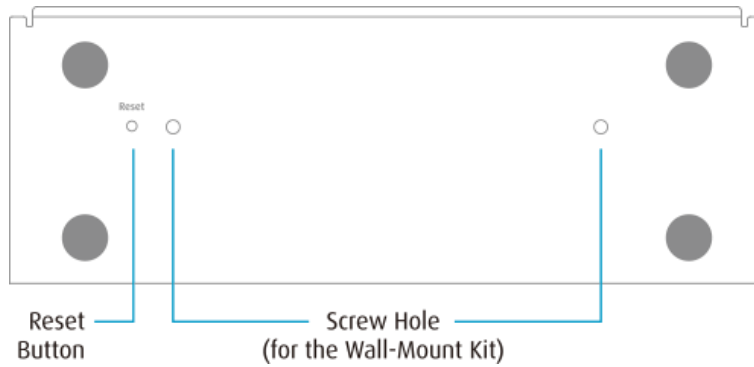
- Rear Panel



<b>Antenna</b>	WiFi antenna
<b>USB Port (Rear)</b>	USB port for USB IWB device (HID type)
<b>RJ-45</b>	10/100M RJ-45 port
<b>VGA</b>	VGA connector
<b>HDMI</b>	HDMI connector
<b>Audio Jack</b>	Audio jack (3.5mm)
<b>Power Jack</b>	Power jack (5V/2.6A)

- ◆ The USB port can support up to 5V/0.5A for touch device/USB drive.

- Bottom Side



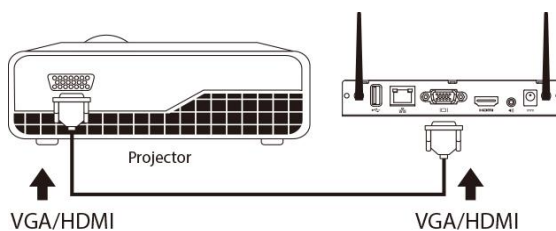
<b>Screw Hole</b>	Screw hole for the wall-mount kit
<b>Reset Button</b>	Press the reset button and the power button on the device to execute hardware reset.

## 5 What You Might Need

- Projector/display with VGA/HDMI interface
- Windows or Mac computer
- Apple iPhone, iPad or iPod touch
- Android phone or tablet
- Speaker (optional, for audio projection)
- USB mouse and keyboard (optional, for remote desktop)
- USB HID touch screen/IWB device (optional, for USB over IP)

## 6 Quick Installation

- 1) Connect the QConnect-1700 box to the projector/display through the VGA/HDMI port and turn on the projector/display power.



- 2) Connect the power adaptor to the QConnect-1700 box. The system will be ready

when the LED light turns green.

- ◆ The default standby screen as shown below will be displayed when the system is ready.



- 3) Insert the speaker cable to the QConnect-1700 audio jack for audio output (Optional when using VGA).
- 4) Insert the USB mouse or keyboard to the QConnect-1700 front USB port for the OSD (on-screen display) control. (Optional)
- 5) Insert the USB IWB/touch screen cable to the QConnect-1700 rear USB port for the remote touch control if needed. (Please note that the two front USB ports do not support the UoIP function).

# 7 Start/Standby Screen of the Projector/Display



## 7.1 Quick Guide

The following information will be shown on the start/standby screen of the projector/display: (a) software download instructions; (b) WiFi network name or SSID [default SSID is QConnect-1700]; (c) IP address [default IP address is 192.168.100.10]; (d) login code.







## 7.2 “Conference Control” Mode

- 1) Click  to enable the “Conference Control” mode. When the “Conference Control” mode is on, only the moderator can decide which user to project his/her screen to the projector/display. That is to say, users are not allowed to project their screens freely.
- 2) Click  to disable the “Conference Control” mode.

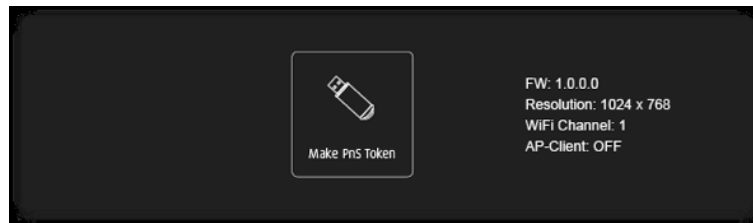
## 7.3 User-List

Click on the “User-List” button  to show all the login users. The moderator can pick which user to project his/her screen to the projector/display.

## 7.4 Setup (Make PnS Token)

- 1) Click on the “Setup” button , and you can: (a) find the information on the firmware (FW) version, resolution, WiFi channel and AP-Client status; (b) make a “Plug & Show” (PnS) USB token.
- 2) How to make a PnS token: (a) Insert a USB drive into the front USB port of the QConnect-1700 box; (b) Click “Make PnS Token” on the standby screen, and the token will be made automatically. **[After completion, you can plug the USB drive into any PC/Mac to perform the projection without installing the MirrorOp**

(Sender) application.]



## 7.5 Screen Saver

The screen saver mode will be activated if no sender device is connected. The system will return to the standby status immediately when any sender device is connected.

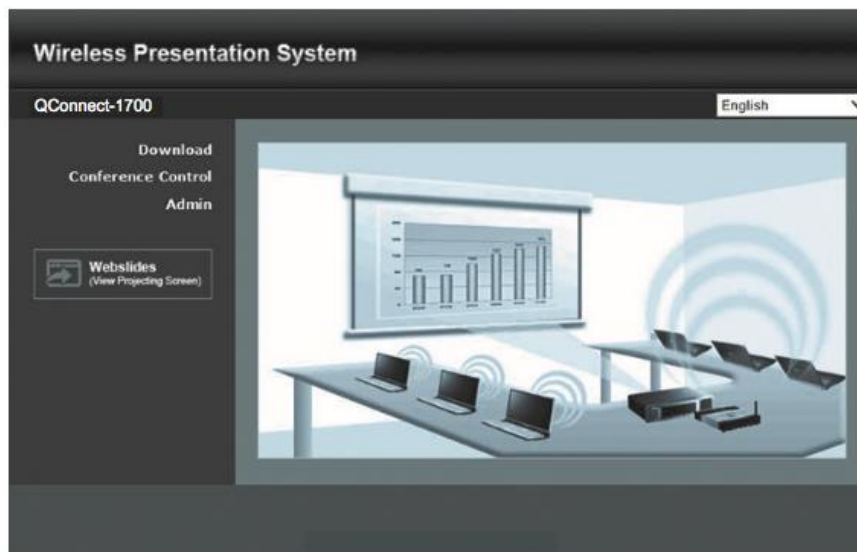
# 8 Web Management

## 8.1 Home Page

- 1) Make sure your sender device is WiFi-enabled, and connect your sender device to the QConnect-1700 box through WiFi. You can find the WiFi network name or SSID of your QConnect-1700 box on the standby screen. (Default SSID is QConnect-1700)



- 2) Open the browser of the sender device, and enter the receiver IP address in the address bar of the browser. You can find the receiver IP address on the standby screen of the projector/display. (Default IP address is 192.168.100.10)

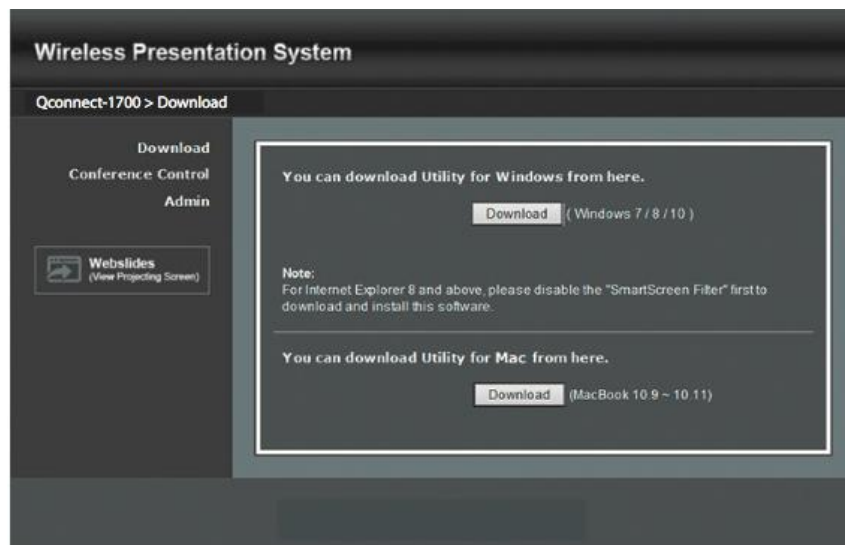


## 8.2 Download

- 1) Select the "Download" function.
- 2) Please select "Utility for Windows" or "Utility for Mac", and click "Download". Then, you can download the "MirrorOp (Sender)" application. **[You can also install the MirrorOp application from the USB token directly.]**

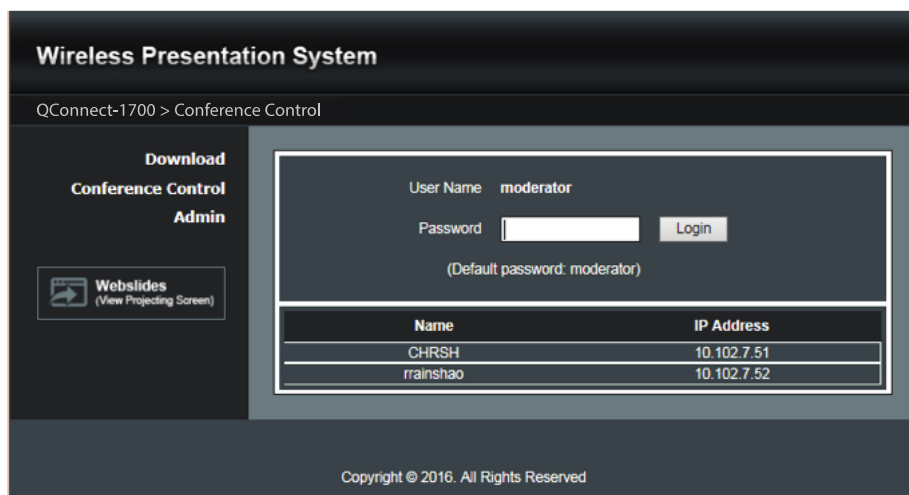
**Note:** Please disable the "Smart Screen Filter" on the IE browser; otherwise you

might not be able to download the file.

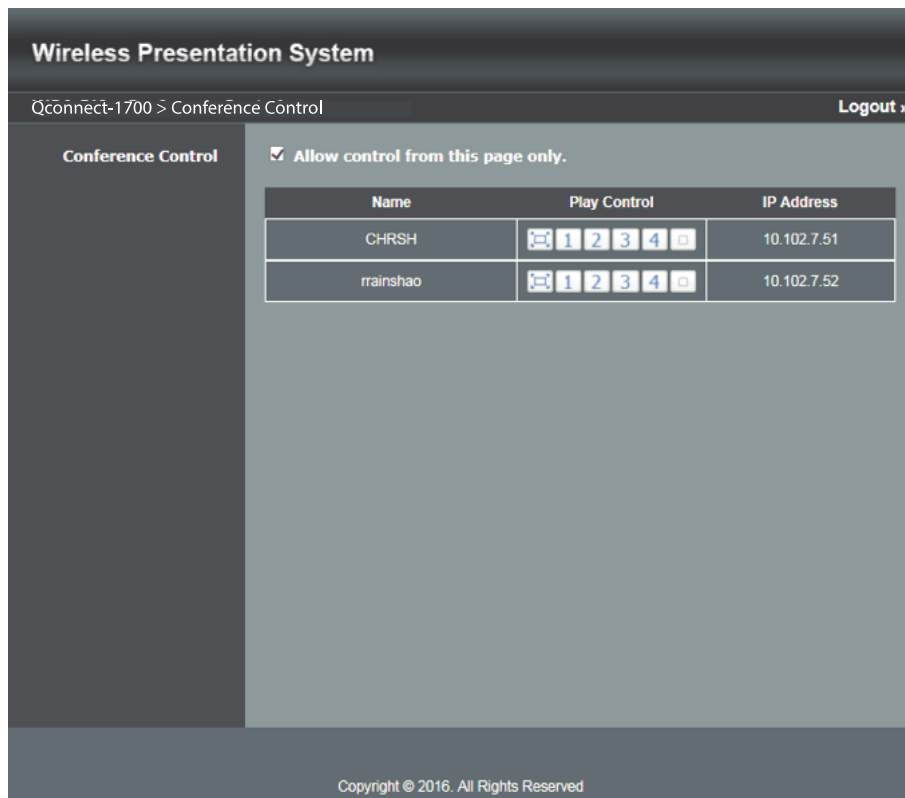


## 8.3 Conference Control

- 1) Select the "Conference Control" function, and a list of connected sender devices will be shown.
- 2) Enter the password and then click "Login". (Default password: moderator)



- 3) After login, you can see a user-list on the screen which indicates all the users connected to the QConnect-1700 box.



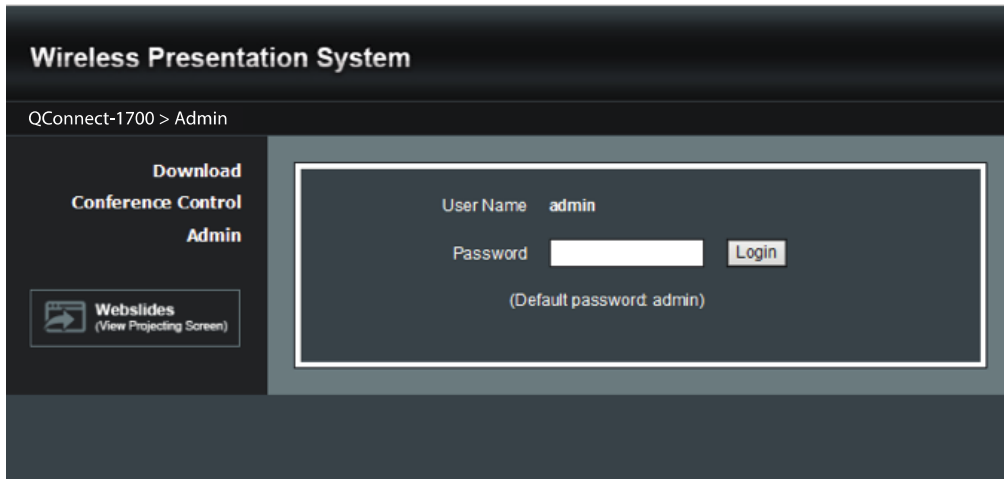
- 4) There are three columns: “Name”, “Play Control” and “IP Address”.
- 5) Play Control: There are six buttons – (a) (full screen); (b)  (upper-left quadrant of the screen); (c)  (upper-right quadrant of the screen); (d)  (lower-left quadrant of the screen); (e)  (lower-right quadrant of the screen); (f)  (stop).
- 6) Uncheck the “Allow control from this page only”, and the centralized control will be disabled, allowing users to project their screens to QConnect-1700 freely.

## 8.4 WebSlides

- 1) Click the “WebSlides” button to enter the WebSlides page.
- 2) Enter the password if necessary.
- 3) Start to capture the current projecting screen.
- 4) Please refer to “**11 Launch WeSlides**” for more information.

## 8.5 Admin

Click [Admin], and then enter the password to log in to the web admin page. (Default Password: admin)



### 8.5.1 System Status

1) Click [System Status], and the current system status will be shown.

< **Model Name** >: Product model name

< **Versions** >

- ◆ **Firmware Version:** version number of the installed firmware

< **Network Status** >

- ◆ **IP address:** IP address of the QConnect-1700 device

- ◆ **Subnet Mask:** subnet mask

- ◆ **Default Gateway:** default gateway

- ◆ **Wireless MAC address:** wireless MAC address

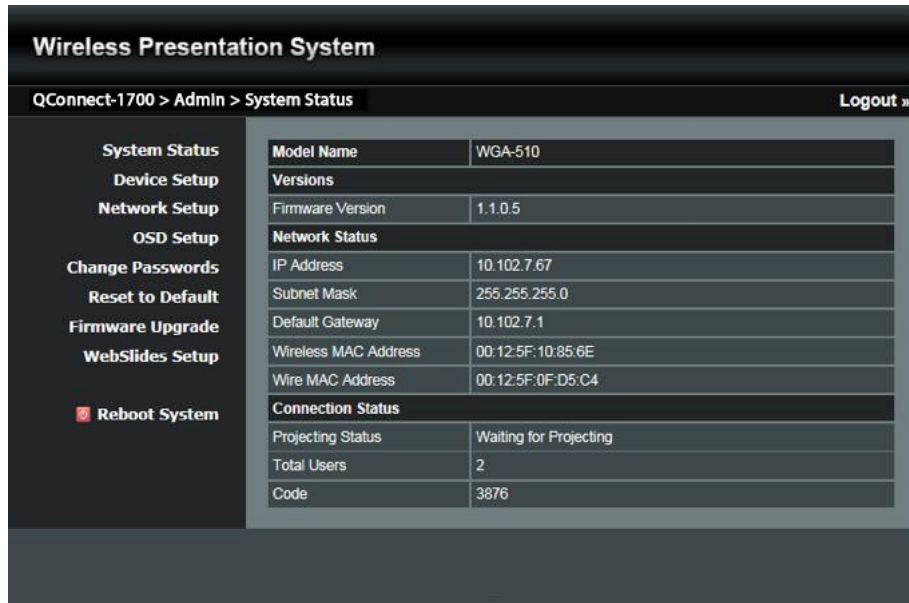
- ◆ **Wire MAC address:** wire MAC address

< **Connection Status** >

- ◆ **Projecting Status:** “Waiting for projecting” or “Projecting”

- ◆ **Total Users:** the number of users logged into the QConnect-1700 device

- ◆ **Code:** login code



## 8.5.2 Device Setup

Click [Device Setup], and the device setting items will be displayed.

- ◆ Choose **<VGA>** or **<HDMI>** (output option)
- ◆ **<Resolution>**:  
  - HDMI**: 720p, 1080i, 1080p
  - VGA**: UXGA (1600\*1200), WXGA+(1440\*900), WXGA (1360\*768, 1280x768, 1280x800), XGA (1024\*768), and SVGA (800\*600).
- ◆ **<Code>**: You can select “Disable”, “Random”, or “Use the following code” to set a specified 4-digit number as the login code.
- ◆ **<IWB USB Port>**: You can configure the IWB USB port to support the “IWB (HID)” or “Mouse/Keyboard” device.
- ◆ **<Apply>** : Confirm and save all modifications.
- ◆ **<Cancel>**: Cancel all modifications.



### 8.5.3 Network Setup

Click [Network Setup], and the network setting items will be shown.

**<Note: The network configuration of QConnect-1700 is automatic via DHCP>**

The default setting of the QConnect-1700 box is DHCP client. When the QConnect-1700 box is connected to a LAN that already has a DHCP server present, the QConnect-1700 box takes an IP address assigned to it by the server. When the QConnect-1700 box is connected to a LAN that does not have a DHCP server, the QConnect-1700 box becomes the DHCP server in the network.

#### < IP Setup >

- ◆ You can select “obtain an IP address automatically” or “Use the following IP address”.
- ◆ IP Address: The default value is 192.168.100.10.
- ◆ Subnet Mask: The default value is 255.255.255.0
- ◆ Default Gateway: The default value is 192.168.100.10
- ◆ DNS Server: The default value is 192.168.100.10

#### < DHCP Server Setup >

- ◆ You can select “Auto” (Enable/Disable the DHCP Server) or “Disable”
- ◆ Start IP: The start IP address of the DHCP Server
- ◆ End IP: The end IP address of the DHCP Server
- ◆ Subnet Mask: The default value is 255.255.255.0
- ◆ Default Gateway: The default value is 192.168.100.10
- ◆ DNS Server: The default value is 192.168.100.10



### < Wireless Setup >

- ◆ Wireless LAN: The default value is “Enable”
- ◆ Host Name and Domain Name: The default name is “QConnect-1700”
- ◆ SSID Broadcast: The default value is “Enable”
- ◆ **Band: The default value is “2.4 GHz” (the “5 GHz” option is available in some regions)**
- ◆ 802.11 mode: The default value is “2.4G B/G/N mixed”
- ◆ Channel: The default value is “Auto” (you can also choose to set a fixed channel). The “Auto” option means that after the QConnect-1700 box is powered on, the system will scan all the wireless channels and select a clear channel automatically.
- ◆ Encryption: The default value is “Disable” (you can also choose “WEP”, “WPA” or “WPA2”).
- ◆ Key: If the “Encryption” function is enabled, you have to set a key value according to the encryption mode you selected.
- ◆ Channel Bandwidth: “20MHz” or “Auto” (20MHz/40MHz) [the default value is “Auto”].

### < AP Client >

- ◆ Connect to Existing AP: The default value is “Disable” (if you choose “Enable”, input the SSID of the existing AP you want to connect to or click the “Scan” button to search and list all surrounding APs.).
- ◆ Encryption: The default value is “Disable” [if you “Enable” the “Connect to Existing AP” function, you shall select the encryption type (“WEP”, “WPA AES”, “WPA2 AES”, “WPA TKIP” or “WPA2 TKIP”) matching the external AP setting.]
- ◆ Key: (If the “Encryption” function is enabled,) you have to set the “Key” value according to the encryption mode you selected (you shall input the key of the external AP).

### < Gatekeeper >

- ◆ You can choose “All Pass”, “All Block”, or “Internet Only” [The default value is “All Pass”]  
“All Pass”: Users connected to QConnect-1700 can freely access internet via the Ethernet cable or AP-Client mode.  
“All Block”: Users connected to QConnect-1700 can only use the network for presentation without access to internet.

“Internet Only”: Only port 80 is allowed for internet connection. Users connected to QConnect-1700 can use the network for presentation and browsing web pages.

**< SNMP >**

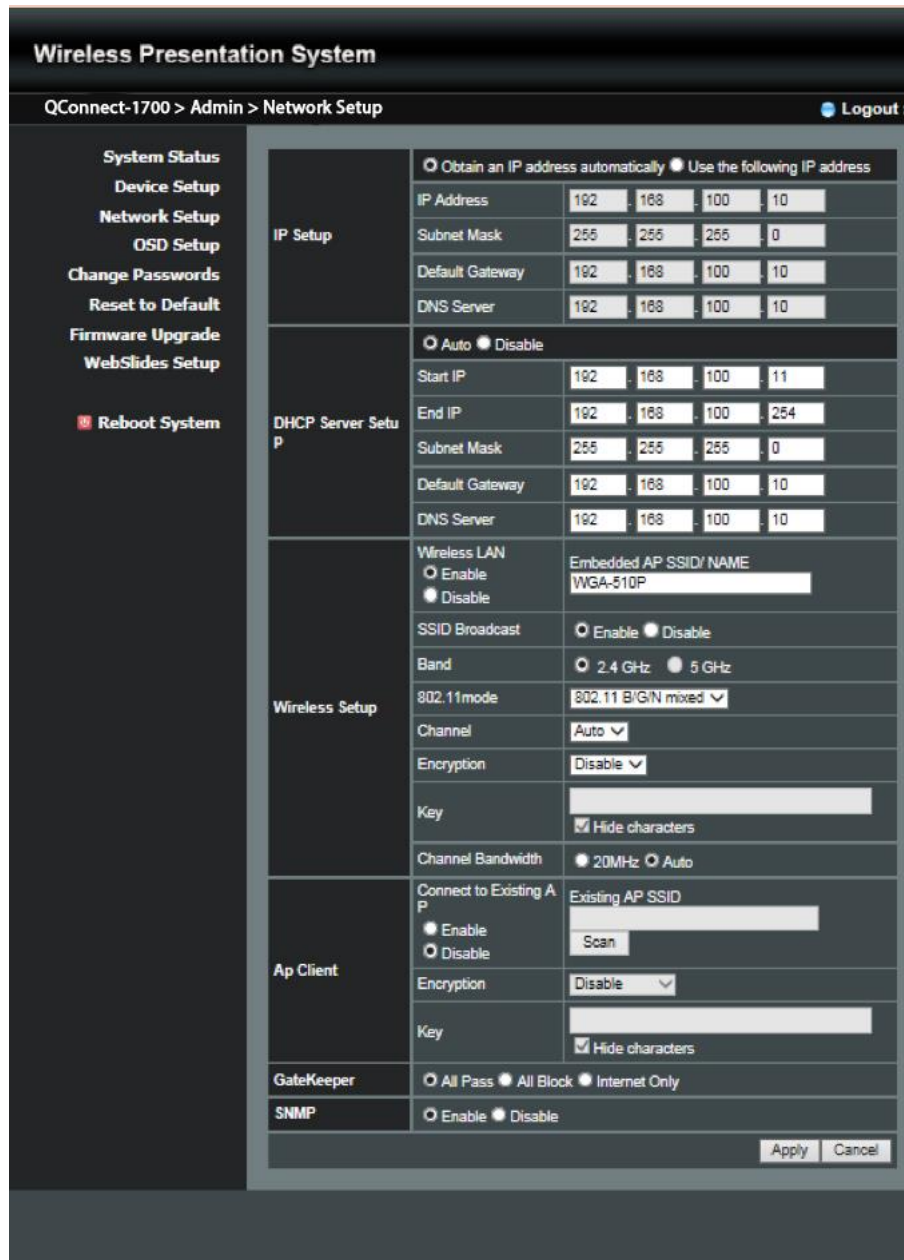
- ◆ You can choose “Enable” or “Disable” [The default value is “Enable”]

**< Apply >**

- ◆ Click the “Apply” button, and follow the reboot instructions as they appear on the screen (for the modifications to take effect).

**< Cancel >**

- ◆ Cancel all modifications



## 8.5.4 OSD Setup

Click [OSD Setup], and you can change the standby image and related settings.

### < Change Standby Image >

- ◆ **Restore to default:** Restore the standby image to the default one.
- ◆ **Browse:** Browse and choose an image file you wish to display on the standby screen.
- ◆ **Image File Upload:** Upload the image file you selected.

### < Display Option >

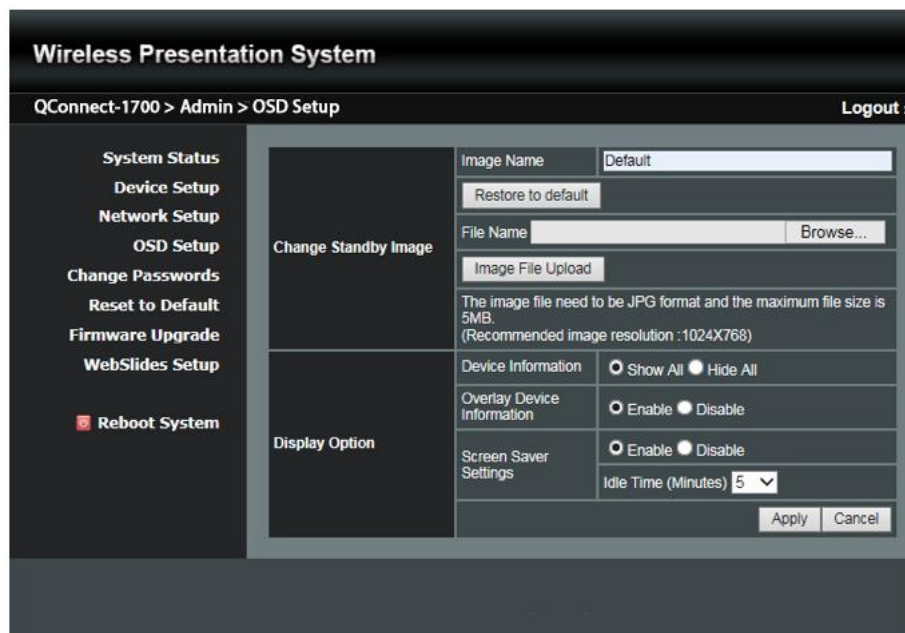
- ◆ **Device Information:** “Show All” or “Hide All” [The default value is “Show All”].
- ◆ **Overlay Device Information:** “Enable” or “Disable” [The default value is “Enable”]
- ◆ **Screen Saver Settings:** (a) “Enable” or “Disable” [The default value is “Enable”]; (b) Configure the “Idle Time” (minutes) [The default value is 5 mins].

**< Apply >**

- ◆ Click the “Apply” button, and follow the reboot instructions as they appear on the screen (for the modifications to take effect).

**< Cancel >**

- ◆ Cancel all modifications.



## 8.5.5 Change Passwords

Click [Change Password], and you can change the password setting.

(Length: up to 8 characters)

**< Conference Control >**

- ◆ **<Enter New Password>**: Enter the new password you want to use for “Conference Control”.
- ◆ **<Confirm New Password>**: Confirm the new password by entering it once again.
- ◆ **<Apply>**: Confirm and save the new password.

### < Admin >

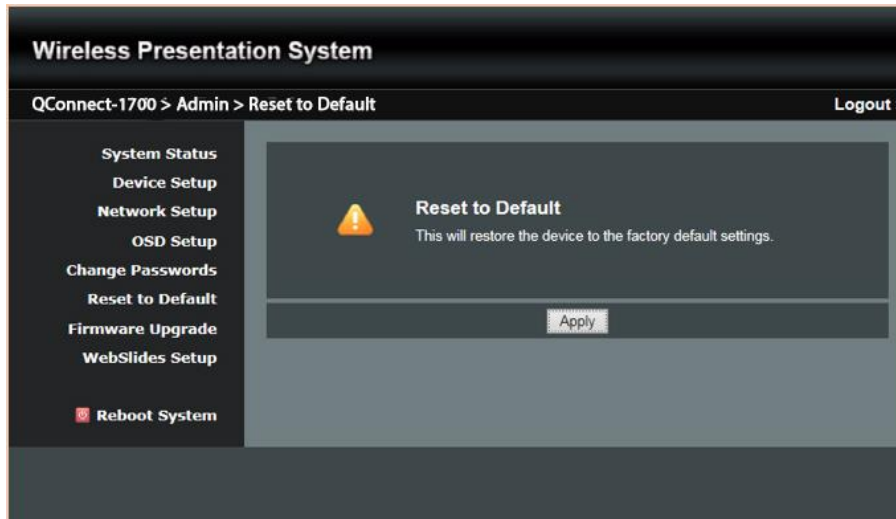
- ◆ **<Enter New Password>**: Enter the new password you want to use for “Admin”.
- ◆ **<Confirm New Password>**: Confirm the new password by entering it once again.
- ◆ **<Apply>**: Confirm and save the new password.

The screenshot shows the 'Wireless Presentation System' web interface. The breadcrumb navigation is 'QConnect-1700 > Admin > Change Passwords'. A 'Logout »' link is in the top right. A left sidebar contains menu items: System Status, Device Setup, Network Setup, OSD Setup, Change Passwords (highlighted), Reset to Default, Firmware Upgrade, WebSlides Setup, and Reboot System. The main content area has two sections: 'Conference Control' and 'Admin'. Each section contains 'Enter New Password' and 'Confirm New Password' input fields, with an 'Apply' button to the right of the confirm field.

## 8.5.6 Reset to Default

Click [Reset to Default] to restore your QConnect-1700 box to the factory default settings.

**<Apply>**: Confirm to perform the reset.



\*\*\* To perform a hard reset to restore your QConnect-1700 box to the factory default settings, please follow the below procedures:

- A. Press the **“Reset”** button (on the bottom side of the QConnect-1700 box) and **Hold. [PLEASE SEE PAGE 6]**
- B. Turn on the QConnect-1700 box.
- C. Wait for over 10 seconds and release the **“Reset”** button.
- D. The QConnect-1700 box will be restored to the factory default settings.

## 8.5.7 Firmware Upgrade

Click [Firmware Upgrade] to import/export the system configuration and upgrade the firmware.

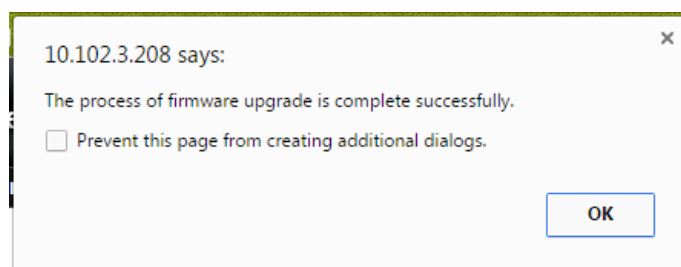
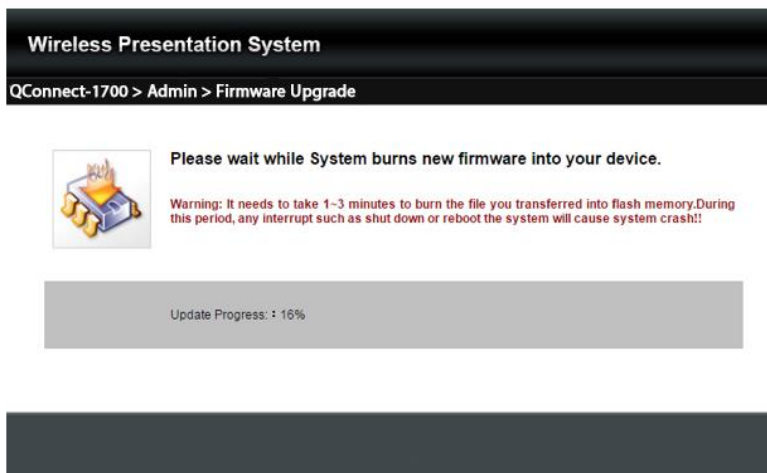
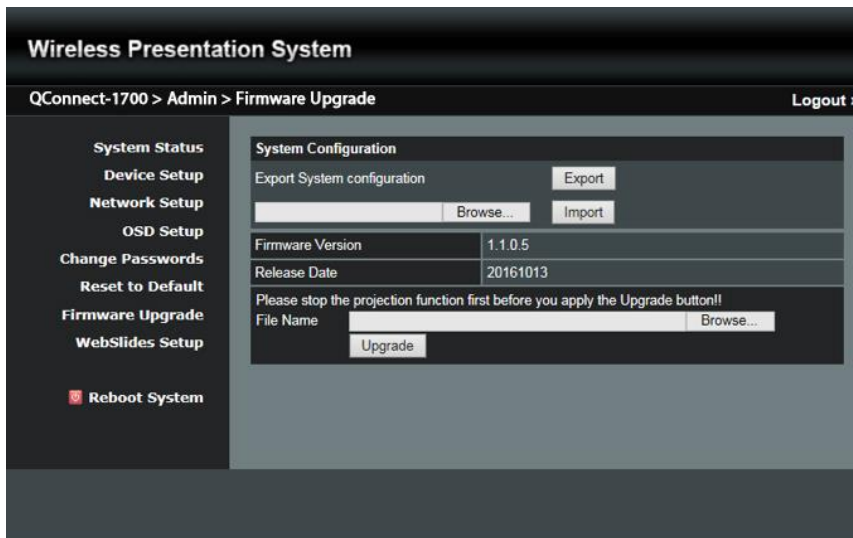
### < System Configuration >

- ◆ **Export:** Export the current system configuration to a configuration file.
- ◆ **Import:** Import a system configuration file to QConnect-1700.

### < Firmware Upgrade >

- A. Firstly, you have to get the latest firmware image file from your vendor.
- B. Click **“Browse”** to select the file you need to upgrade the firmware.
- C. Click **“Upgrade”** to perform the upgrade.
- D. A warning message will be shown, and a progress bar will appear on the screen.
- E. After a few minutes, a message will be shown on the screen, telling you the upgrade is complete.

F. QConnect-1700 will reboot to complete the upgrade.



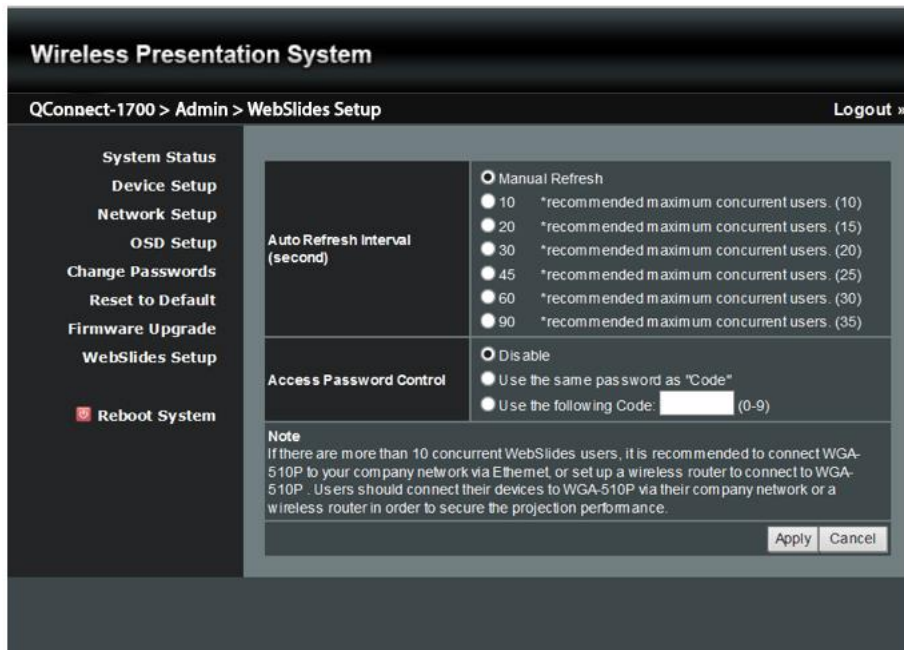
**Warning:** Do not power off the QConnect-1700 box while the firmware upgrade is in progress; otherwise your QConnect-1700 box may crash and you have to return the device to your vendor for repair.

## 8.5.8 WebSlides Setup

Click [WebSlides Setup] to set up the WebSlides function.

< **Auto Refresh Interval** >: Choose “Manual Refresh”, “10”, “20”, “30”, “45”, “60” or “90” seconds refresh interval

< **Access Password Control** >: Choose “Disable”, “Use the same password as Code” or “Use the following Code”



**Note:**

It is important to realize that all the WebSlides users consume wireless bandwidth. If there are more than 10 concurrent WebSlides users, it is recommended to connect QConnect-1700 to your company network via Ethernet, or set up a wireless router to connect to QConnect-1700. Users should connect their devices to QConnect-1700 via their company network or a wireless router in order to secure the projection performance. The number of concurrent WebSlides users should not exceed the recommended number shown on the WebSlides Setup page (displayed as above) to avoid connection failure or poor projection performance.

### 8.5.9 Reboot System

1) Click [Reboot System], and you can restart the system.

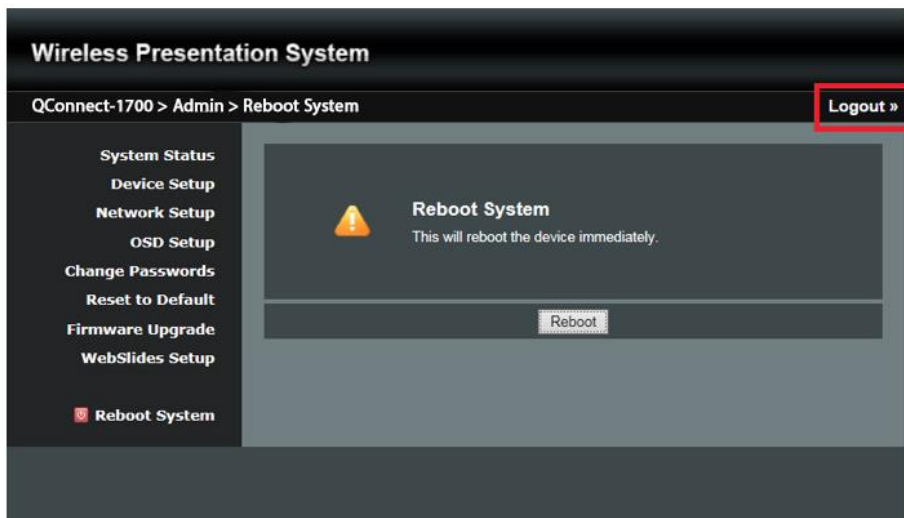
<**Reboot**>: Reboot the system automatically.





### 8.5.10 Logout


- 1) Click [Logout] (on the upper-right corner of the screen), and you can log out of the admin page (and return to the web management front page).

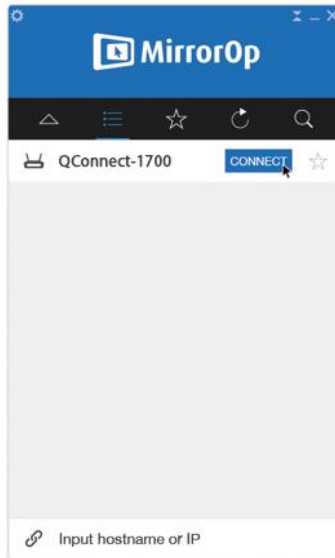


## 9 Using MirrorOp (Sender) to Start Projection

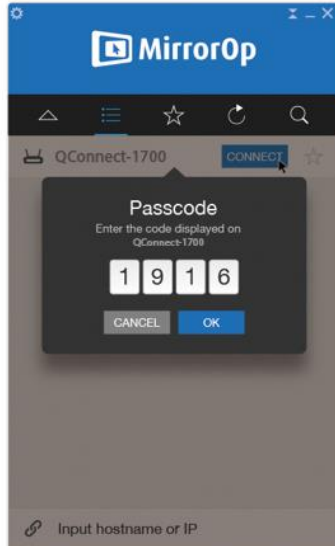
### 9.1 Start the MirrorOp application

Windows:

- 1) Click the MirrorOp icon  on the desktop to execute the application, or launch the MirrorOp application from the USB token directly.
- 2) It will start to search for the QConnect-1700 device automatically.



- 3) Click on the QConnect-1700 device and enter the login code shown on the display.

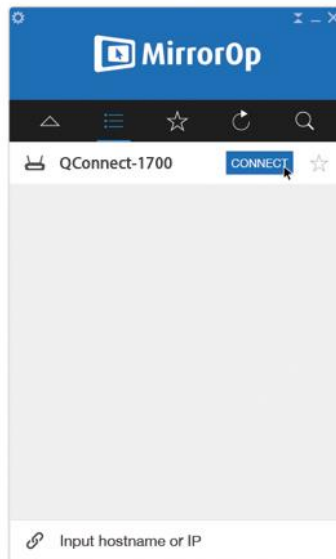


- 4) Click the “PLAY”  button to start the screen sharing.

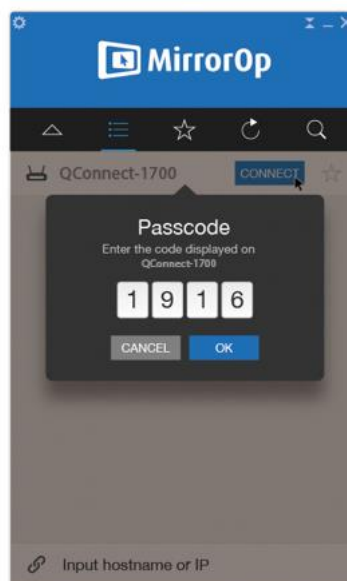


## Mac:

- 1) Click on the MirrorOp icon  from the Applications folder to execute the application.
- 2) It will start to search for the QConnect-1700 device automatically.



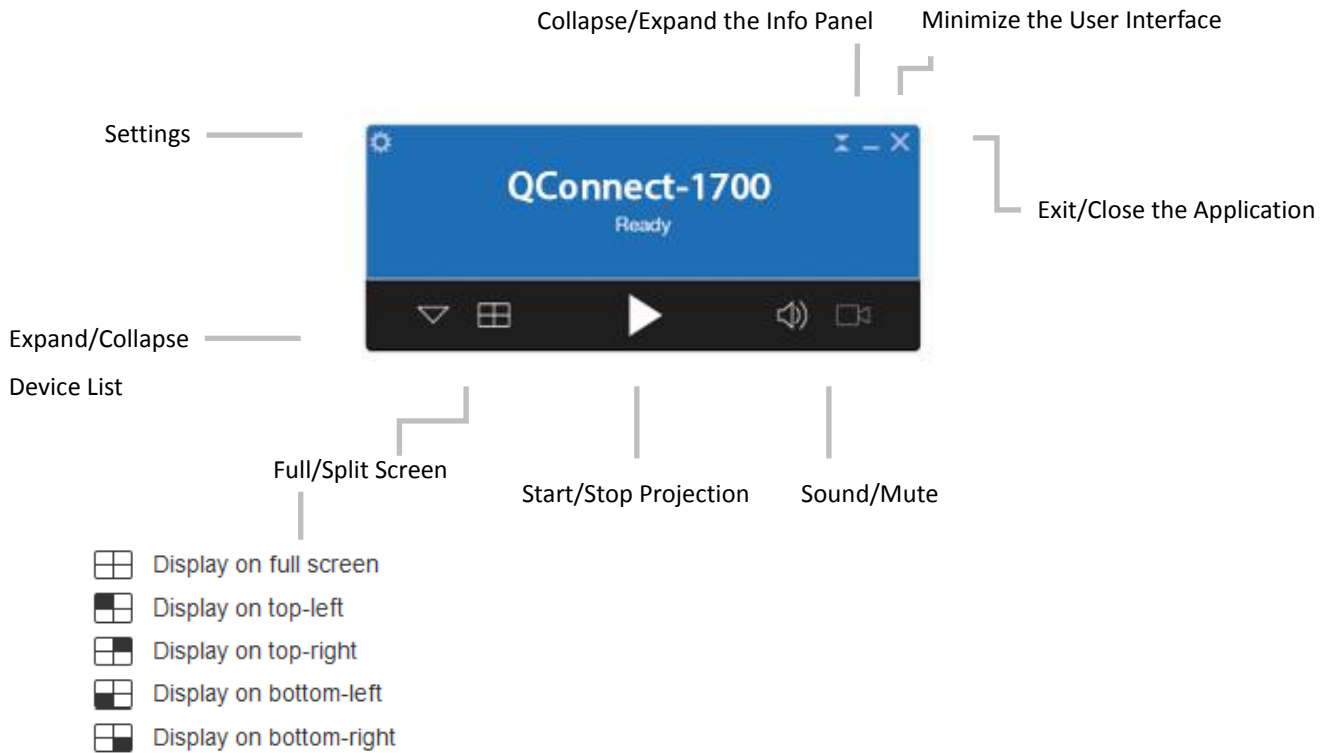
- 3) Click on the QConnect-1700 device and enter the login code shown on the display.




- 4) Click the “PLAY”  button to start the screen sharing.

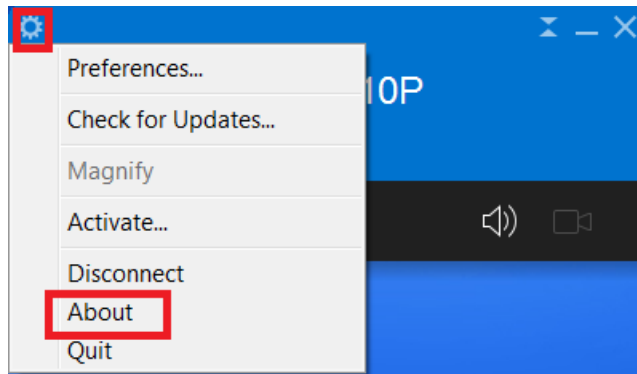


## 9.2 Main User Interface of MirrorOp (Sender)



## 9.3 A Complete User's Guide on MirrorOp (Sender)

- 1) For a complete user's manual on MirrorOp (Sender), click the "Settings" icon  on the upper-left corner of the info panel. Then, click "About" in the menu bar.



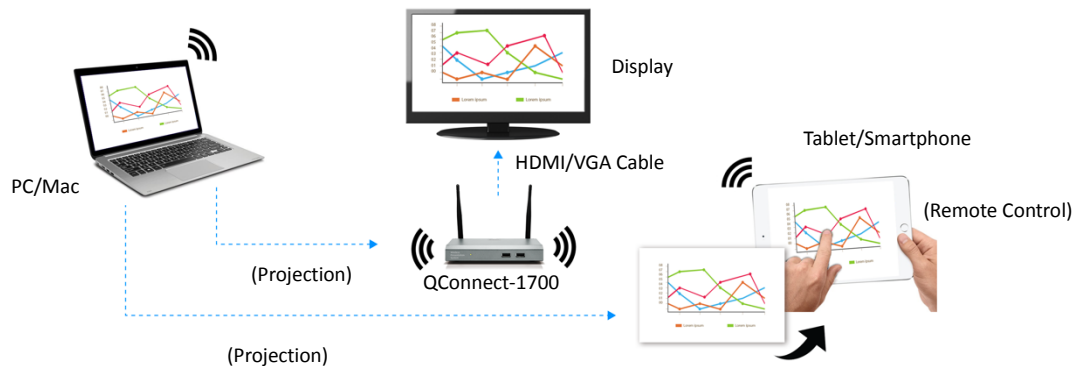
- 2) Click “Get Help” on the lower-right corner of the screen, and then you can view the “MirrorOp User’s Manual”.



# 10


## Launch “MirrorOp Receiver” (the SidePad Function)

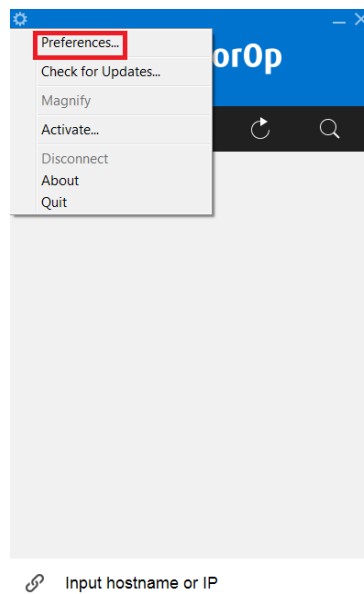
- 1) **Introduction:** MirrorOp Receiver is an app which allows the user to connect tablet/smartphone (Android and iOS), PC/Mac, and display/projector via QConnect-1700 (i.e. the SidePad function). The user can then control the projecting PC/Mac via tablet/smartphone.



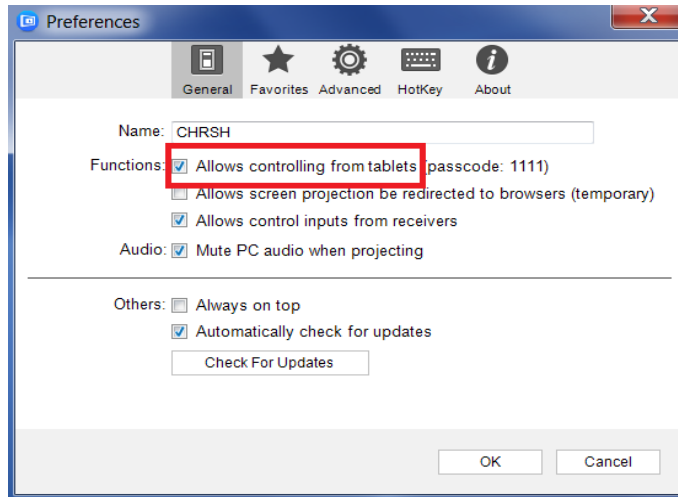
## 2) How to use the SidePad function:

### A. PC/Mac with the MirrorOp (Sender) app installed

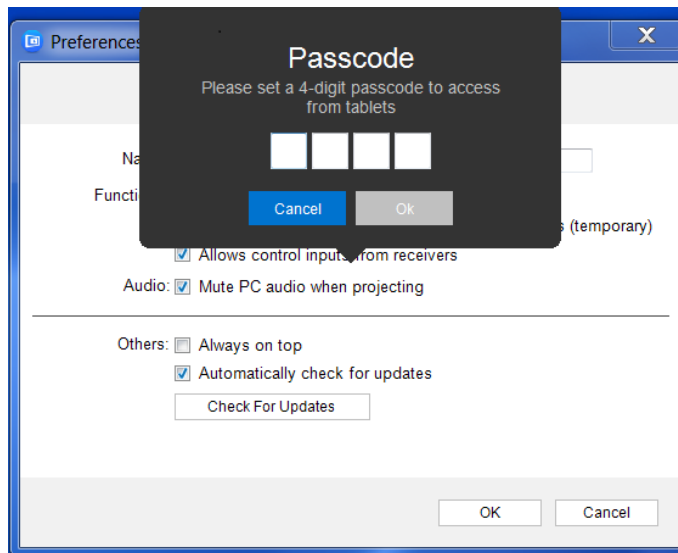
- Click the “Settings” icon  on the upper-left corner of the info panel.  
Then, click “Preferences” in the menu bar.



- Check “Allows controlling from tablets”

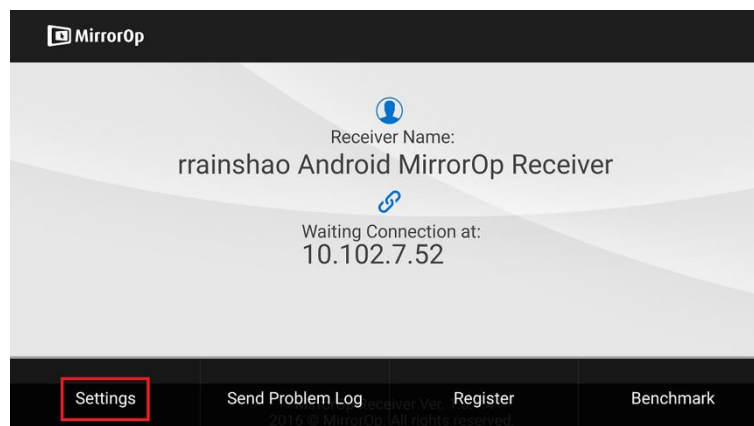


- Set the passcode (default passcode: 1111)

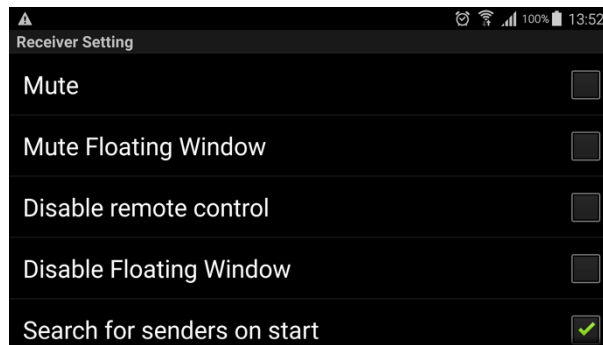


## B. Tablet/Smartphone with the “MirrorOp Receiver” app installed Android

- Install the “MirrorOp Receiver” app from the Google Play store.
- Open the “MirrorOp Receiver” app. Long-press the Menu button on your Android device, and click “Settings”.



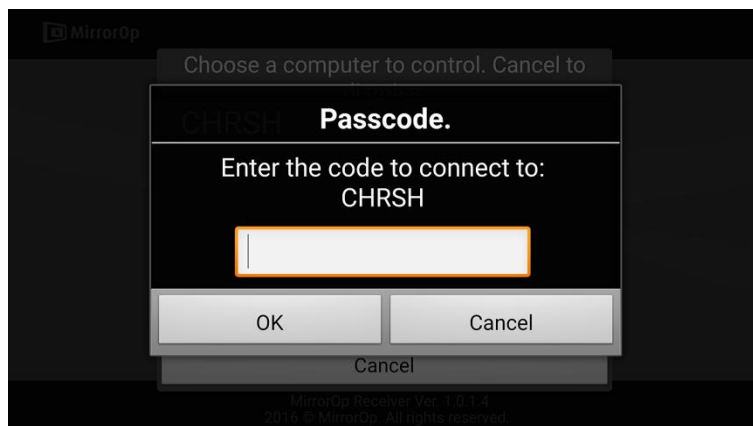
- Check “Search for senders on start”.



- Close MirrorOp Receiver and re-open it.
- You will see the name of the PC/Mac with the MirrorOp (Sender) app installed.



- Select which PC/Mac you want to control and enter the passcode you set earlier.



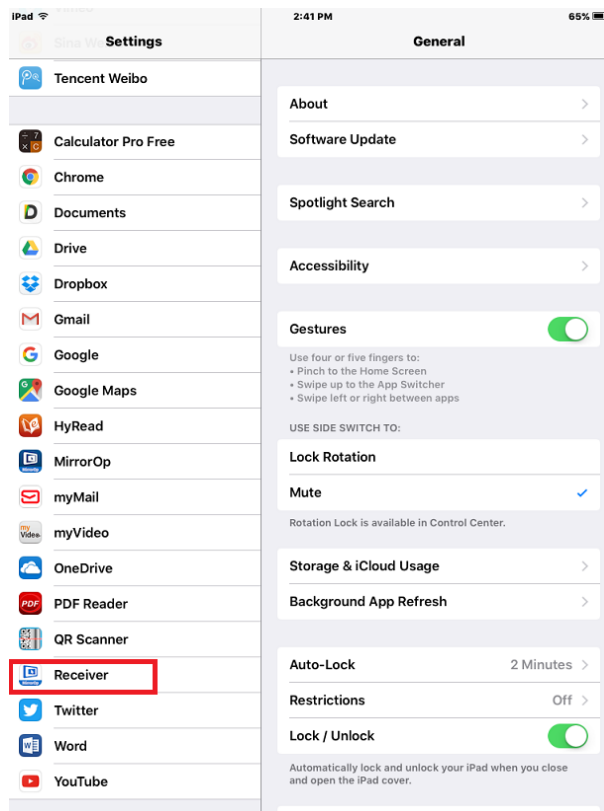
- Now you are able to remote control the Mac/PC from your tablet/smartphone.

## iOS

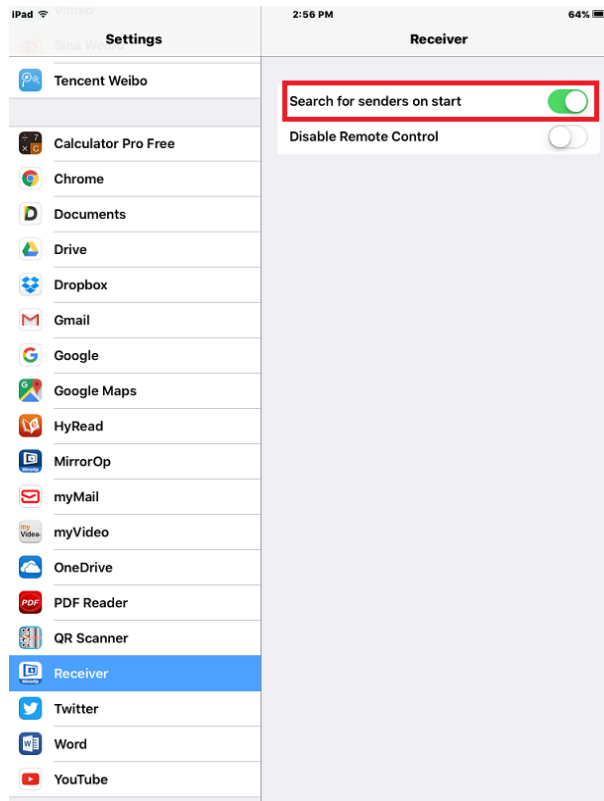
- Install the “MirrorOp Receiver” app from the Apple App store.



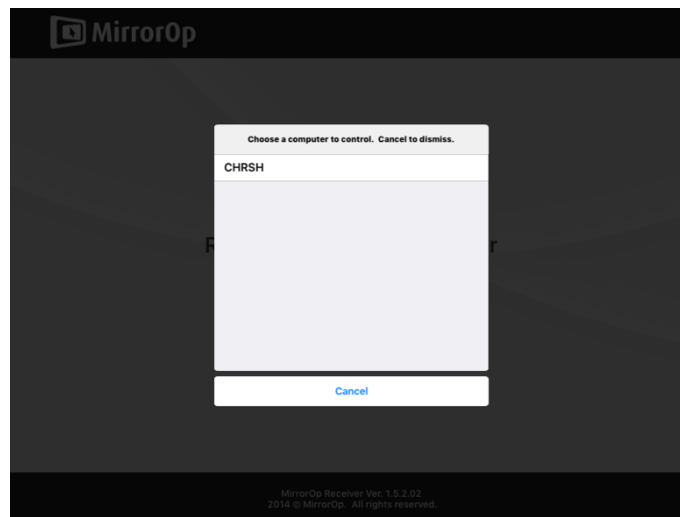
- Go to “Settings”  on your iOS device, and click “(MirrorOp) Receiver”.



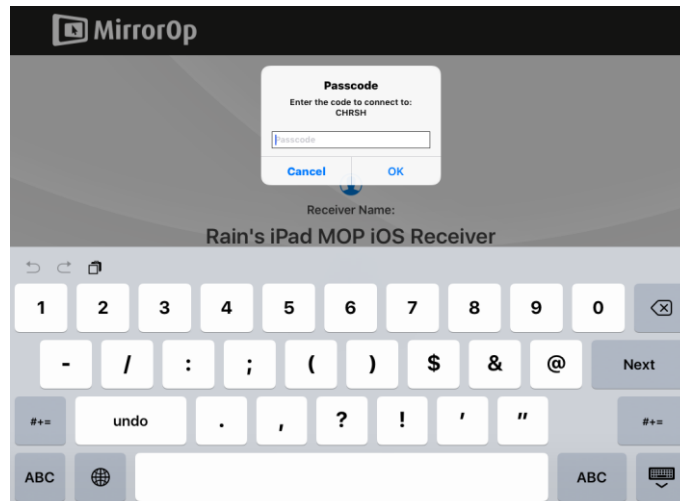
- Enable “Search for senders on start”.



- Open the “MirrorOp Receiver” app.
- You will see the name of the PC/Mac with the MirrorOp (Sender) app installed.



- Select which PC/Mac you want to control and enter the passcode you set earlier.



- Now you are able to remote control the Mac/PC from your tablet/smartphone.

# 11 Launch WebSlides

**Introduction:** The Webslides function allows the presenter (PC/Mac with the MirrorOp Sender app installed) to broadcast the projecting screen/slides to the audience (multiple login devices) during a presentation, so that the audience can save the slides for note-taking later.

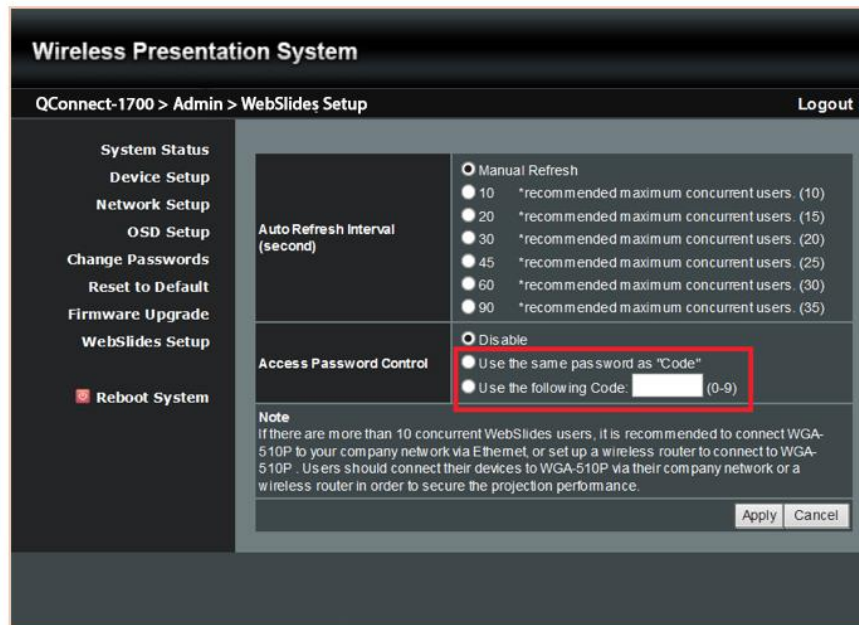
**Note:** The WebSlides function is not available when the Quad-Screen mode is on.



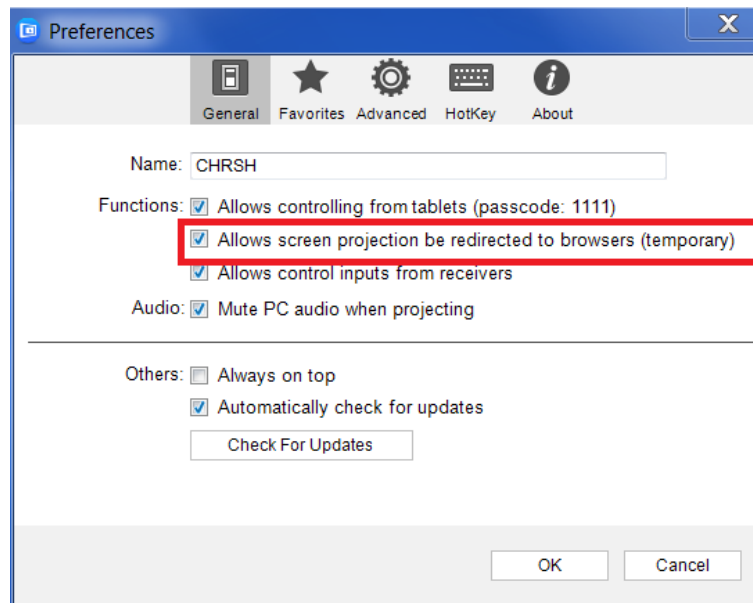
- Connect your mobile device to WGA-510P via WiFi
- Open your web browser, and enter the IP address of WGA-510P
- View the presenting slides on your device...save the slides as JPG files for note-taking, annotation or others
- A new way of paper-less meeting

## 1) Presenter:

- Your PC/Mac needs to connect to the QConnect-1700 box via WiFi.
- Make sure the WebSlides function is enabled on the WebSlides Setup page.

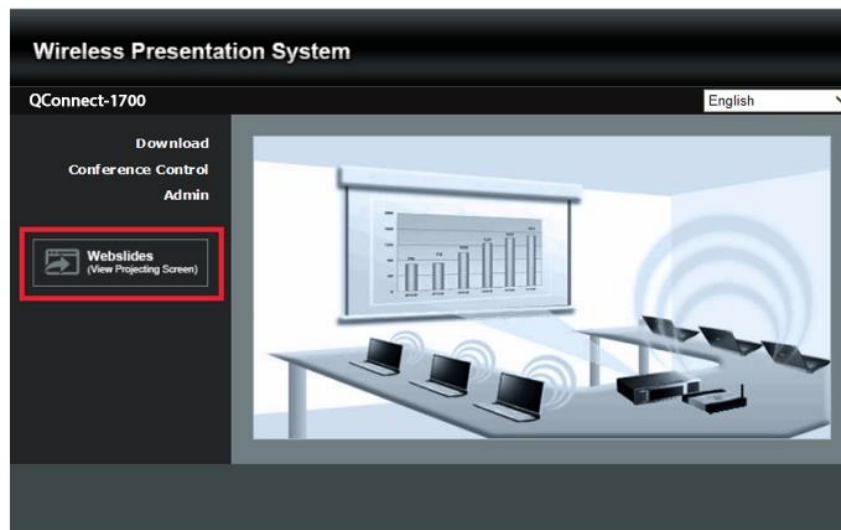



- Make sure the Weblides function is enabled by the MirrorOp Sender app.



## 2) Audience:





- The audience also need to connect to QConnect-1700 via WiFi.
- Open the browser of the audience's login devices, and enter the IP address of QConnect-1700 in the address bar of the browser. **[Default address is 192.168.100.10]**
- The below image will appear on the audience's devices. Click "Websildes" on the middle-left of the screen.



- The audience will see the below image on their devices, and they can start to receive the projecting screen/slides. They can save the projecting screen (for note-taking later) by clicking  in the menu bar at the top of the screen



# 12 Wall-Mount Kit

1. Insert the two short screws (  ) into the two holes on the bottom side of the QConnect-1700 box. [Remember to place the two plastic washers (  ) between the two short screws (  ) and the QConnect-1700 box.]
2. Install the mounting bracket on the wall with the four long screws (  ).
3. Secure the QConnect-1700 box to the mounting bracket.

