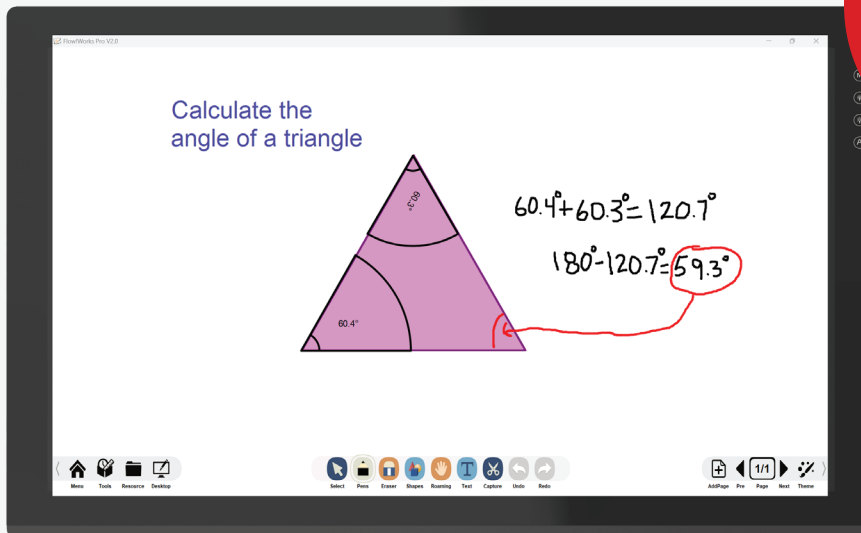


INTERACTIVE PODIUM

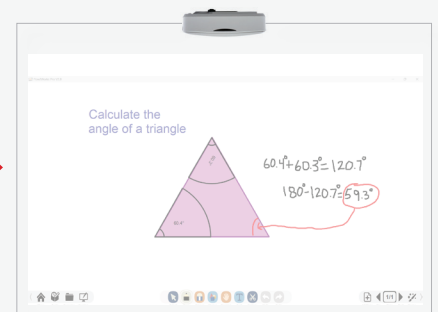
# presenstation™ 800 F1

Control your display with the PresenStation™ 800 F1 4K interactive podium without having to turn your back on your audience.

**Write, draw, and annotate** on your documents, slides, and desktop with our fast electromagnetic pen technology that simulates writing on paper.



Turn off the capacitive touch with a tap of a button to enable palm rejection



## ✓ What Sets the PresenStation 800F1 Apart

### MULTIPLE CONNECTION PORTS

Designed as a presentation tool, we added **an HDMI input and output for projecting, 1 USB Type C, 3 USB extenders.**

### UNIVERSAL VESA MOUNT

An adjustable tabletop mount is included, but the back of the PresenStation has a **standard VESA pattern**, so use whatever mount you like. Even one that rotates.

### PRESSURE SENSITIVE TOUCH

**EM technology** allows you to draw heavy or faint lines like you would with an actual pen on paper. Point-by-point touch allows for more precise pen touch without palm interference.

### INTUITIVE CAPACITIVE TOUCH

**Multi-touch for fingertips** makes it easy and intuitive to use – just like using your smartphone. And, unique to QOMO, this feature can be turned on/off with the touch of a button.

## PresenStation 800F1

**Panel Type** Active-Matrix Liquid Crystal Display (TFT)

**Effective Screen Size** 24 inch 20.75(H) × 11.67(V) inches

**Resolution** 3840(H) × 2160 (V)

**Color Support** 1.07B

**Brightness** 300 cd/m<sup>2</sup>

**Surface** Anti-Glare

**Viewing Angle** 178° (H), 178° (V)

### Writing Characteristics

**Touch Technology** 10-points Capacitive Touch and Electromagnetic Pen Touch

**Pen** Battery-less Passive Pen PA2

**Tablet Resolution** 5080Lpi

**Pen Pressure** 8192 Levels

**Reading Accuracy** ±0.5 mm (center)

**Tracking** Approximately 220 points per second

**Capacitive Touch** 14 ms speed, 10 point touch

### Ports

**Inputs** HDMI, USB Type C, USB Type A (3.0) x 3, USB Type B (3.0), 12v DC Power

**Outputs** HDMI × 1

SPECS FOR USB 3.0

### Physical Specs

**External Dimensions** 517 (W)×321.8 (H)×30 (D) mm (without stand)

**Stand Adjustment** Adjustable in the range of 12° to 130°

**Compatible Operating Systems** Windows 10 or above, Mac 10.9 or above or Chrome OS.