

QOMO toolkit



about us

interactive is a given.
intuitive is QOMO.



QOMO is a leading US brand and global manufacturer of educational and collaboration technology.

We're the only partner with a full product offering for collaborative classrooms and conference rooms. After doing this for more than 20 years, we understand how to work with everyone from CEOs and CTOs to district administrators and classroom teachers.

QOMO focuses on creating user-friendly technologies that allow everyone to enjoy what they do best.

SOMETIMES ONE IS THE LOVELIEST NUMBER

It's always easier dealing with fewer companies than many. Our products integrate with your existing technology to be easy to use and easy on the budget.

THE RIGHT SIZE TO BE BOTH RELATABLE AND RELIABLE

From Sales to Support, you'll never be treated as anything less than an actual human being. We're the right size to take care of you the right way, right away.



INTERACTIVE DISPLAY

wanderboard™ 32

4K | Portable Stand | Built-In Camera + Mic
For moments that don't happen at a desk or on a wall.

grab-and-go collaboration.

WanderBoard 32 is designed for **flexible workspaces**, moving easily between rooms, groups, and ideas. **It rolls between spaces** and **rotates vertically or horizontally**, so content fits the moment.

With a **built-in camera and microphone**, it's ready for collaboration wherever work happens.



Learn more about the WanderBoard 32 at
qomo.com/interactive-displays/wanderboard-32/
or scan the QR code.



wanderboard™ 32

Screen size	32"
Screen/Backlight Type	LCD / ELED
Aspect ratio	16:9
Resolution	4K UHD (3840×2160)
Brightness	250 cd/m2 (Typ)
Contrast ratio	3000:1
Life time	30000 hrs (min)
Colour gamut (DCI-P3)	90% (Typ)
View area	697.3056x392.2344mm
Viewing angle	178° (H), 178° (V)
Display Colors	16.7M

System

Touch	10-points capacitive touch
Processor	RK3576-D
Operating system	Android 14.0 (EDLA Certified)
CPU	Octa-Core
GPU	Mali-G52 MC3
RAM/ ROM	8G/ 128 GB

Additional Features

Speakers	2×8W
Camera	8 megapixel
External interface	HDMI×1 / Type-C×1 / USB3.0×1
Wi-Fi	Wifi 6
Bluetooth	5.2
Battery capacity	9500 mAh/14.4V (4-5 hours)
Power Supply	90W, 19V/4.74A
Rotation	±90°
Lift	7.9 inches (200 mm)
Pitch	±20°
Product Size (W × D × H)	28.9 × 16.9 × 2.2 inches (734 × 429 × 55 mm) Without Base 28.9 × 16.8 × 52.4 inches (734 × 426 × 1331mm) With Base
Package Size (W × D × H)	39.9 × 9.8 × 20.9 inches (1013 × 250 × 530mm)
Net weight / Gross Weight	50.7 lbs (23.0 kg)/ 60 lbs (27.2 kg)
Accessories	Quick Guide, Power Supply, Mobile Stand, Remote Control, Screws × 4



INTERACTIVE PANEL
bundleboard i



i complete me.

More than just a tool—it becomes an extension of you, adapting to your unique teaching style and preferences wherever you go.

BundleBoard i is the most comprehensive **Google EDLA certified** interactive display that fully embraces **Google's ecosystem**. With access to the complete **Google Playstore** and **upgradeable Android OS**, the BundleBoard i transforms to match your evolving needs.

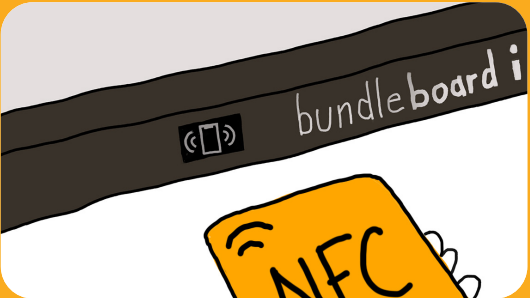


Learn more about the BundleBoard i at qomo.com/bundleboard-i or scan the QR code.



		65"	75"	86"	98"
BundleBoard i Series					
Model		QITBB65 i	QITBB75 i	QITBB86 i	QITBB98 i
Backlight	DLED	●	●	●	●
Aspect Ratio	16:9	●	●	●	●
Resolution	4K	●	●	●	●
Touch Points	50 Points	●	●	●	●
Industrial Glass	Super Smooth, Anti-Glare, Anti-Fingerprint	●	●	●	●
Brightness	400cd/m2	●	●	●	●
Operating System	Android 14 (upgradeable)	●	●	●	●
RAM/ROM	8G DDR4/128 GB	●	●	●	●
Wireless	WiFi 6/Bluetooth	●	●	●	●
NFC	Yes! ISO/IEC 14443@13.56Mhz ISO/IEC 15693@13.56Mhz	●	●	●	●
Windows OPS (optional add-on)	i5 8GB or i7 16GB	●	●	●	●
Audio					
Built-In Mic	24ft Range	●	●	●	●
Speaker Output	Front-Facing 2X20W	●	●	●	●
Power					
Working Voltage	100-240V, 50/60Hz	●	●	●	●
Max Power Consumption		≤300W (<0.5W standby)	≤380W (<0.5W standby)	≤400W (<0.5W standby)	≤500W (<0.5W standby)
Physical Specs					
VESA		600 x 400 mm	800 x 400 mm	800 x 600 mm	800 x 600 mm
Dimensions	L×W×D	58.6×35.75×3.4 in	67.3×40.6×3.4 in	77×46.1×3.8 in	88.4×52.2×3.5 in
Packing Dimensions	L×W×H	64×39.9×7.3 in	73.35×45.5×8.9 in	83×51.3×8.9 in	94.7×58×11 in
Net Weight/Gross Weight		76.5lbs/91.6 lbs	102.4lbs/124 lbs	120.6lbs/154 lbs	120.6lbs/154 lbs
Ports	4 USB 3.0, 1 USB 2.0, 2 Touch USB, 3 HDMI in, 2 USB-C, 1 DP, 1 MIC In, 1 VGA, 1 Audio Out, 1 SPDIF, 1 RS232 (Baud Rate 9600), 1 HDMI Out, 2 LAN (10M/100M/1000M) In/Out, TF Card Slot (expandable storage)				

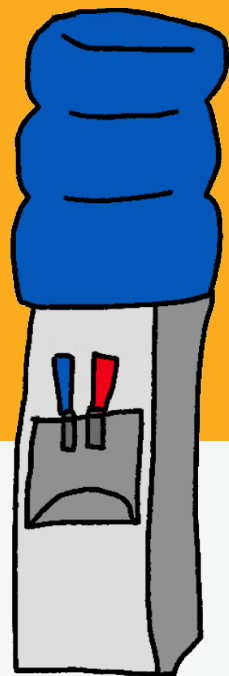
i remember.
i follow.
i adapt.



NFC SUPPORT FOR LOGINS

tap once. it's already you.

Tap your card, scan a QR code, or enter your password and your digital workspace appears instantly.



INTERACTIVE DISPLAY

simpleboard™ j

4K | Modular | Simplified Setup
For spaces where clarity, flexibility and ease matter most.

basic on purpose.
SimpleBoard j is built for **simplicity and flexibility across rooms**. With **no built-in operating system**, it works with the platform your organization chooses—making it easier to **standardize setups** and keep everyone aligned.

With **fewer built-in components to manage**, it's easier for IT teams to support and maintain, delivering a reliable experience every time.



Learn more about the simpleboard j at qomo.com/simpleboard-j or scan the QR code.



simpleboard j

65"

75"

86"

Model		QITSB65 j	QITSB75 j	QITSB86 j
Display Parameter	DLED	●	●	●
Backlight	OPS Options	●	●	●
Aspect Ratio	16:9	●	●	●
Resolution	4K	●	●	●
Infrared Touch	40 Points	●	●	●
Glass Type	≥9H heat-tempered, Anti-glare, Zero Bonded	●	●	●
Brightness	450cd/m²	●	●	●
Life Time	≥50,000 hrs	●	●	●
Response Time	≤5ms	●	●	●
Speakers	Front-Facing 2 x20W	●	●	●
Operating System	None	●	●	●
Compatible Operating Systems	Windows, Mac, Chrome, Linux	●	●	●
OPS Options	i5 8 GB or i7 16 GB Windows OPS, Chrome Flex OPS, Android EDLA OPS	●	●	●

Power				
Power Requirements	AC 100 V ~ 240 V, 50/60 Hz	●	●	●
Power Consumption Without OPS		330W	395W	470W
Standby Condition	<0.5W	●	●	●
Physical Specs				
VESA	4-M8 Screw Hole 600 mm x400 mm	●	●	●
Dimensions (LxWxH)	LxWxD	1483.9 mm x 87.4 mm x891.2 mm	1705 mm x 87.6 mm x1015.7 mm	1950.4mm x 87.6 mm x1153.7 mm
Packing Dimensions L*W*H	LxWxH	1640 mm x 185 mm x 1010 mm	1860 mm x 185 mm x 1125 mm	2095 mm x 185 mm x 1265 mm
Housing Material	Aluminum/Metal plate	●	●	●
Ports	1*USB-C, 4*USB 3.0, 1*USB 2.0, 1*Touch-USB-A 3.0, 1*Touch-USB-B 2.0, 3*HDMI IN, 1*DP IN, 2*LAN, 1*RS232 IN, 1*OPS, 1*Audio IN, 1*Audio OUT, 1*VGA IN			
Accessory	Remote Controller, Pens x 2, 3M Power Cord, 3 M USB A-B Cable, 3M HDMI Cable, Wallmount			

INTERACTIVE PANEL

slot-in computers

Pick and choose from QOMO's selection of slot-in computers for a robust and effortless experience.

Learn more about our agnostic software offering at qomo.com/accessories/modular-slot-in-ops/



Windows OS
Model: QIT-PC5-6

Optional add-on for QOMO Touch Screens

Add the power of i5 8GB RAM & 128 GB ROM to your interactive display to use your favorite Windows or Linux software



Windows OS
Model: QIT-PC7-4

Optional add-on for QOMO Touch Screens

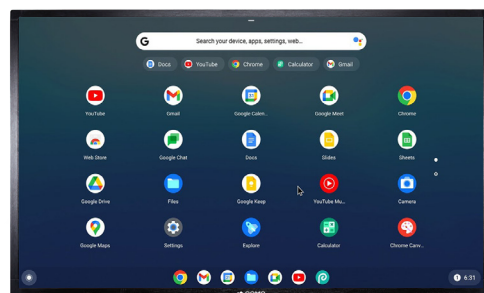
Add the power of i7 16GB RAM & 512 GB ROM to your interactive display to use your favorite Windows or Linux software



Android 13 EDLA
Model: QIT-PC3-Flex

Optional add-on for QOMO Touch Screens

Plug the QOMO Android OPS into your favorite QOMO display and access the world of Google Playstore. Your favorite apps are available with a single touch included Microsoft apps, Youtube, and Netflix.



Chrome OS Flex
Model: QIT-PC3-Flex2

Optional add-on for QOMO Touch Screens

The ChromeOS Flex Slot-in Computer module allows you to upgrade your existing QOMO Interactive Displays to access the Google environment. ChromeOS Flex offers secure, cloud-based, easy-to-manage, and fast performance.

INTERACTIVE PANEL

software

QOMO panels come with software at no additional costs or hidden fees. Our panels also work with software you're already using.

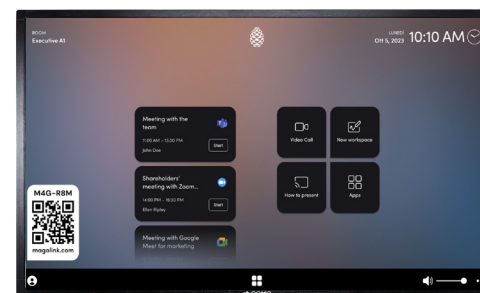
Learn more about our agnostic software offering at qomo.com/software.

Our products adapt to software you're already using!



Flow!Works Pro by QOMO
Included with QOMO Touch Screens

QOMO's Flow!Works Pro is an interactive whiteboarding and annotation software. Communicate ideas easily with digital tools, such as rulers and a calculator.



Mago Pro by our partners at Mago

Optional add-on for QOMO Touch Screens

An all-in-one collaboration solution with one-touch access to 20+ video conferencing platforms, presentations, smart annotation, whiteboarding, and enterprise apps.



VISO MDM by our partners at Radix
Optional add-on for QOMO Touch Screens

Radix VISO MDM enables you to monitor, manage and control all of your school's devices through a single, cloud-based platform, enabling complex operations and tasks to be completed in a refreshingly simple manner.

INTERACTIVE PANEL

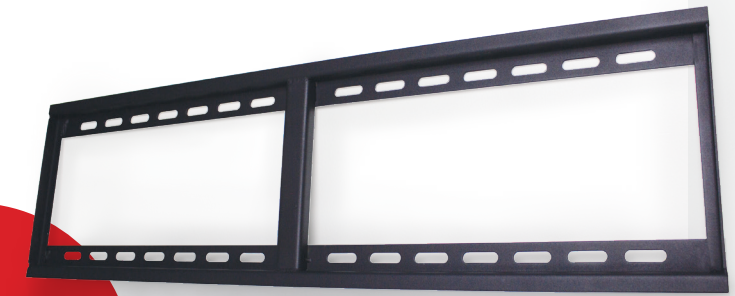
mounts & stands

QOMO offers height-adjustable, mobile, and even motorized mounts and stands for the Bundleboards and other interactive displays.

Learn more about our mounts and stands at qomo.com/accessories.

Standard VESA Mount

Our fixed wall mount comes with the QOMO IFPs and **holds up to 300 pounds**, which is a lot of weight!

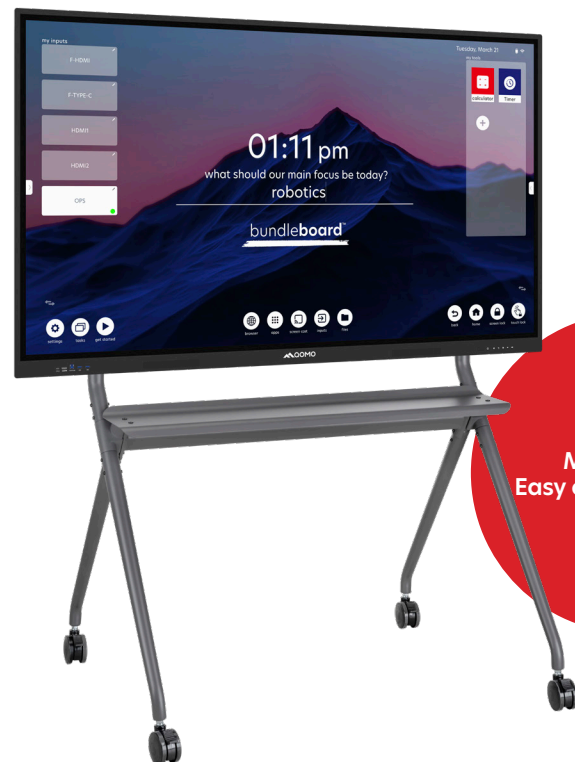


This mount is included with QOMO panels!

A PROUD PARTNER OF

BalanceBox®

Model: QIT-Stand 2



Fixed Mobile Stand

We designed this **mobile stand to be easy on your budget** and perfect for your QOMO panel or any non-QOMO panel. It comes with a convenient shelf for your computer and a rectangular gear base to prevent tripping.

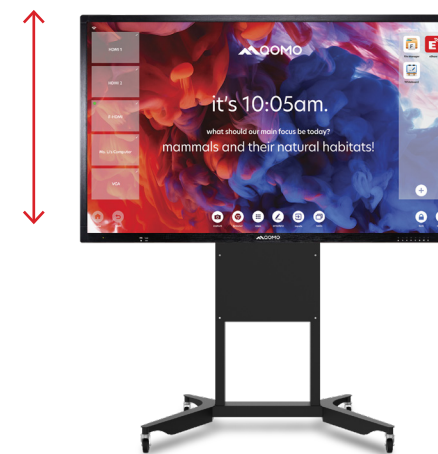
Made by us!
Easy on your budget.



Model: QIT-Stand G

Height Adjustable Mobile Stand

The new **BalanceBox® 400** is a height adjustable stand for education. It has a patented spring system that neutralizes gravity, making it easy and safe to move your display up or down and allowing users of all ages and heights to access the screen.



Height Adjustable Mounts

Model: QBB400-70 (For 65" & 75")
Model: QBB400-90 (For 86")

Height Adjustable Stand

Model: QBB400-70, QBB400-Mobile-e (For 65" & 75")
Model: QBB400-90, QBB400-Mobile-e (For 86")

Fixed Height Stand

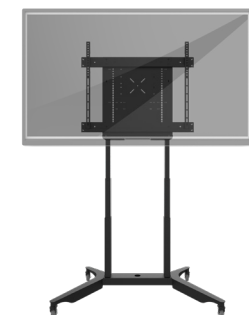
Model: QBB481A70 VESA,
QBB400-Mobile-e

Motorized Stands

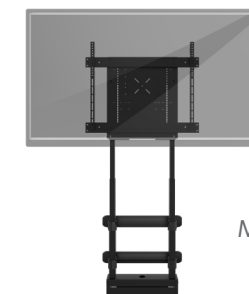
The **e-Box®** is a product range of high quality motorized display panel mounts. Make height adjustments to your display panel or tilt it back up to 90 degrees for a completely flat work surface with the push of a button.



Model: 487A03 e-Box



Model: 487A11011 e-Box



Model: 487A12015 e-Box

BalanceBox® stands are UL Certified!

web cams & conference cams

Radically improve your virtual conferences with QOMO's top notch cameras. They are plug & play and compatible with all operating systems.

Learn more at: www.qomo.com/products/conference-cams/

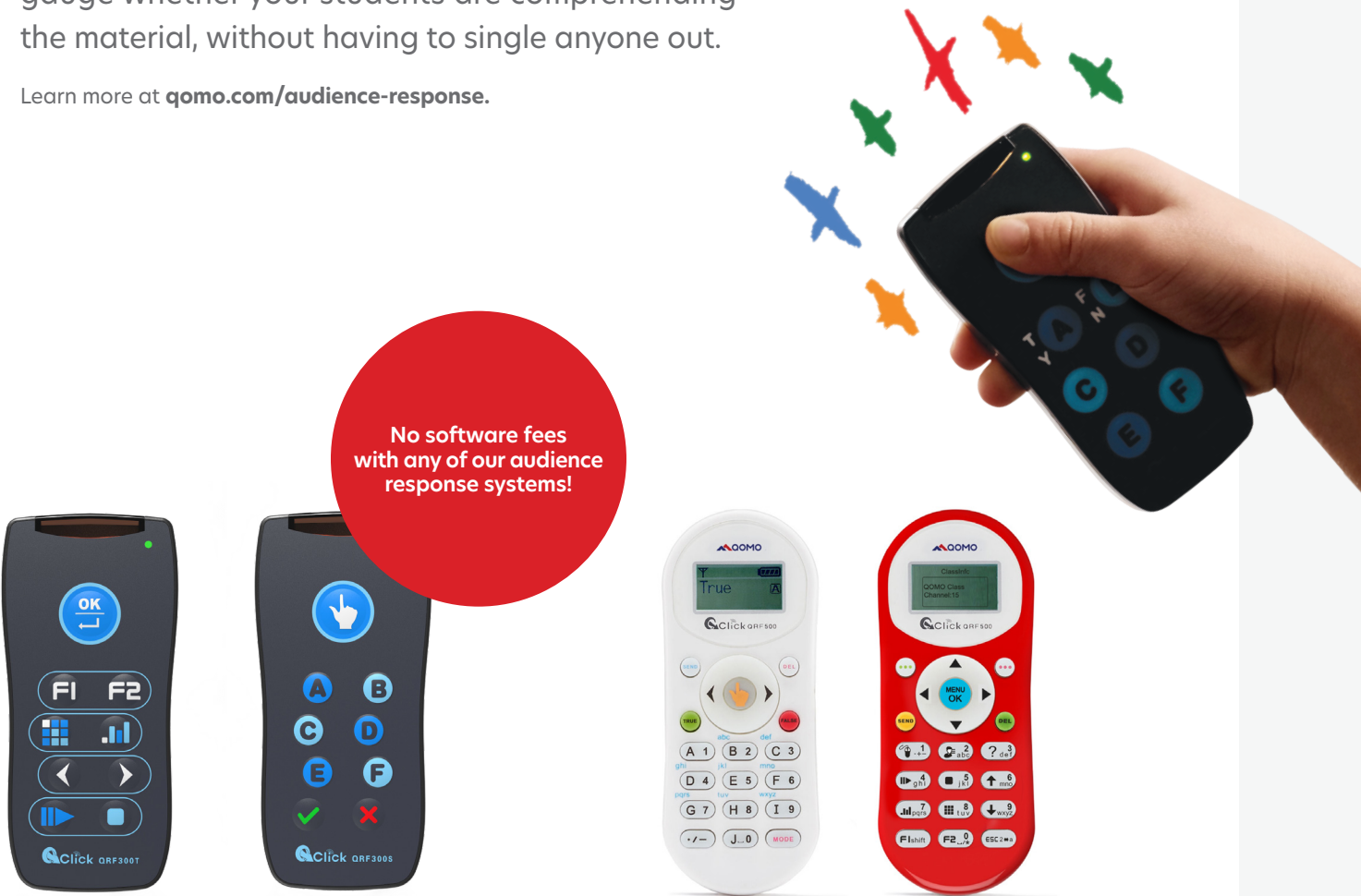


Model	QWC-004	QWC-006
Resolution	1920x1080p	4K
Image Sensor	CMOS	1/2.8 in 4K CMOS
Focus	Fixed	Fixed
Frame Rate	30 fps	30 fps
Interface	USB 2.0 Plug & Play	USB 3.0 Plug & Play
Microphone	Built-in Dual	Built-in Dual
Field of View (FOV)	D=77 degrees	D=120 degrees
System Compatibility	Windows/Mac/Android/Linux/Chrome	Windows/Mac/Android/Linux/Chrome
Zoom	None	10x
PTZ Control	None	Supports ePTZ; remote & auto adjust
USB Protocol	UVC, UAC	UVC, UAC
Dimensions	3.6 x 1.3 x 1.0 in	7 in x 25 in x 1.8 in
Weight	0.3 lbs	0.5 lbs
Otional Tripod Dimensions (H)	6 in (folded), 8.5 in (unfolded)	

audience response

A classroom response system can help you instantly gauge whether your students are comprehending the material, without having to single anyone out.

Learn more at qomo.com/audience-response.



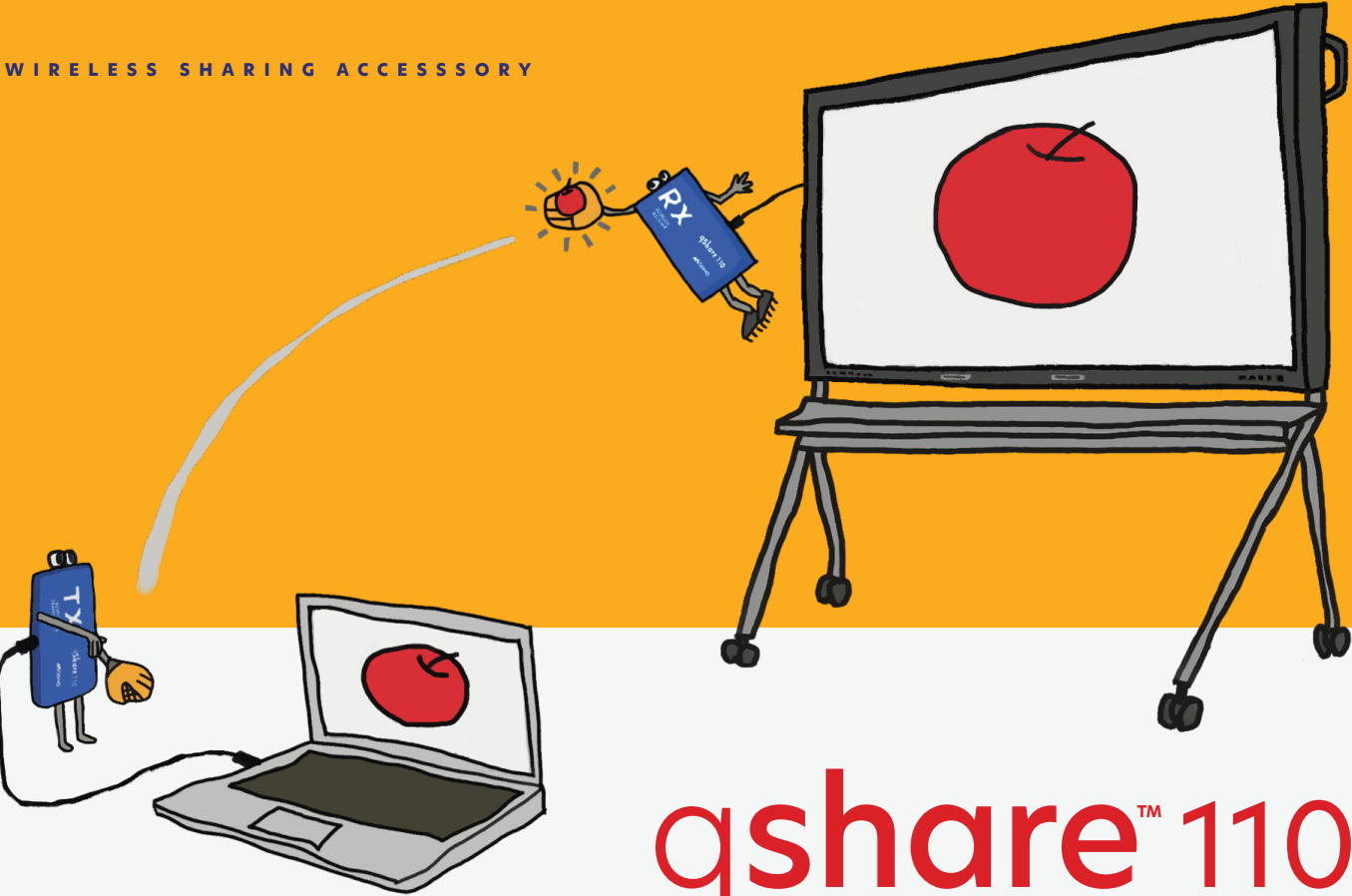
AUDIENCE RESPONSE SYSTEM QClick QRF300

- Multiple-choice selections for quizzes and polls.
- 100% participant engagement
- PowerPoint Integration: Seamlessly integrate questions into your presentations.
- Export Results a to Excel for analysis.
- Up to 150 ft, supports 240 student clickers.

AUDIENCE RESPONSE SYSTEM QClick QRF500

- Multiple-choice and short-answer question options.
- 100% participant engagement
- PowerPoint Integration: Seamlessly integrate questions into your presentations.
- Export Results a to Excel for analysis.
- Up to 150 ft, supports 240 student clickers.

WIRELESS SHARING ACCESSORY



qshare™ 110

4K | Wireless Casting | No Network Required
For fast, wireless sharing from personal devices.

big throw. clean catch.
crystal-clear 4k.

With QShare 110, content moves from laptops, tablets, and cameras to the display in a single step – staying clear, responsive, and reliable as the room works together.

Because when sharing is easy, ideas don't slow down.



qshare™ 110

WiFi	2.4 / 5Ghz
Range	100 ft
Connectivity	HDMI / USB-C
Resolution	4K@30Hz max
Power supply	DC 5V/1A

ACCESSORIES

audience response

A classroom response system can help you instantly gauge whether your students are comprehending the material, without having to single anyone out.

Learn more at qomo.com/audience-response.



No software fees
with any of our audience
response systems!



AUDIENCE RESPONSE SYSTEM
QClick QRF300

- Multiple-choice selections for quizzes and polls.
- 100% participant engagement
- PowerPoint Integration: Seamlessly integrate questions into your presentations.
- Export Results a to Excel for analysis.
- Up to 150 ft, supports 240 student clickers.

AUDIENCE RESPONSE SYSTEM
QClick QRF500

- Multiple-choice and short-answer question options.
- 100% participant engagement
- PowerPoint Integration: Seamlessly integrate questions into your presentations.
- Export Results a to Excel for analysis.
- Up to 150 ft, supports 240 student clickers.

INTERACTIVE PODIUM

presenstation™ 800 f1

write, speak, share.
never look away.

keep your eyes on your audience and
your ideas front and center.

The PresenStation 800F1 is designed to help you stay
present while you **write, draw, navigate, and respond** in
real time — using your fingertips or a stylus on
a responsive capacitive touchscreen.



Everything stays in front of you, so interaction happens
face-to-face with your audience, not behind a screen.



PresenStation 800F1

Panel Type	Active-Matrix Liquid Crystal Display (TFT)
Effective Screen Size	23 inch 20.75(H) × 11.67(V) inches
Resolution	4K (3840 × 2160)
Color Support	1.07B
Brightness	300 cd/m2
Surface	Anti-Glare
Viewing Angle	178° (H), 178° (V)

Writing Characteristics

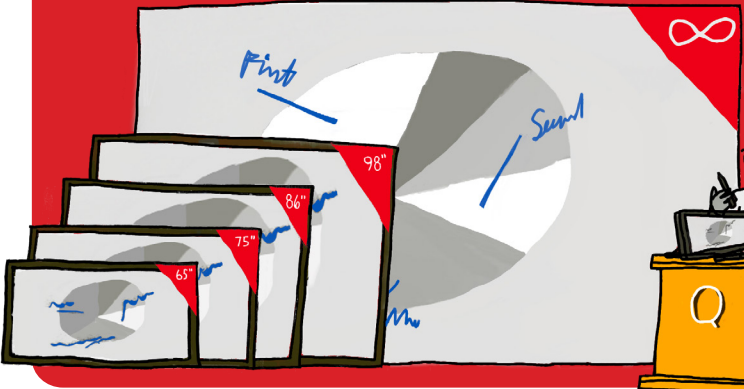
Touch Technology	10-points Capacitive Touch and Electromagnetic Pen Touch
Pen	Battery-less Passive Pen PA2
Tablet Resolution	5080Lpi
Pen Pressure	8192 Levels
Reading Accuracy	±0.5 mm (center)
Tracking	Approximately 220 points per second
Capacitive Touch	14 ms speed, 10 point touch

Ports

Inputs	HDMI, USB Type C, USB Type A (3.0) x 3, USB Type B (3.0), 12v DC Power
Outputs	HDMI × 1

Physical Specs

External Dimensions	517 (W)×321.8 (H)×30 (D) mm (without stand)
Stand Adjustment	Adjustable in the range of 12° to 130°
Compatible Operating Systems	Windows 10 or above, Mac 10.9 or above or Chrome OS.



big screen?
bigger screen?
entire wall?

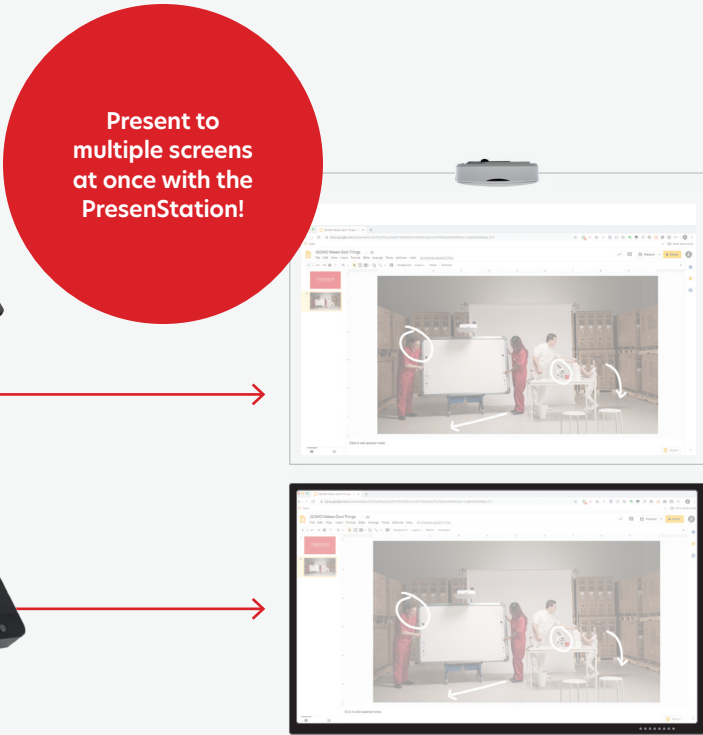
PresenStation moves your content from display to
display—even entire walls—no change in how you
teach, speak, or present.

INTERACTIVE PODIUM

presenstation™ 600f3

The PresenStation™ 600F3 interactive podium gives you complete control over your presentation without having to turn your back on your class.

This bright and incredibly responsive display allows you to **write**, **draw**, and **annotate** on your desktop with a touch pen that simulates writing on paper.



✔ What Sets the PresenStation 600f3 Apart

MULTIPLE CONNECTION PORTS

Designed as a presentation tool, we added **2 HDMI outputs for simultaneous projecting, and 2 USB extenders**. Control presentations across multiple screens without turning your back.

UNIVERSAL VESA MOUNT

An adjustable tabletop mount is included, but the back of the PresenStation has a **standard VESA pattern**, so use whatever mount you like. Even one that rotates.

PRESSURE SENSITIVE TOUCH

EM technology allows you to draw heavy or faint lines like you would with an actual pen on paper. Point-by-point touch allows for more precise pen touch without palm interference.

INTUITIVE CAPACITIVE TOUCH

Multi-touch for fingertips makes it easy and intuitive to use — just like using your smartphone. And, unique to QOMO, this feature can be turned on/off with the touch of a button.

PresenStation 600F3

Panel Type	Active-Matrix Liquid Crystal Display (TFT)
Effective Screen Size	21.5 inch 478.64(H) × 270.11(V)
Resolution	HD (1920 × 1080)
Standard Colors	16.7M
Brightness	250 cd/m2
Surface	Anti-Glare
Viewing Angle	178° (H), 178° (V)

Writing Characteristics

Touch Technology	Capcitive and Electromagnetic
Pen	Battery-less Pen
Tablet Resolution	5080Lpi
Pen Pressure	8192 Levels
Reading Accuracy	±0.25 mm (center)
Tracking	Approximately 220 points per second
Capacitive Touch	14 ms speed, 10 point touch

Ports

Inputs	HDMI, USB Type A (3.0) x 2, USB Type B (3.0), 12v DC Power
Outputs	HDMI × 2

Physical Specs

External Dimensions	517 (W)×321.8 (H)×30 (D) mm (without stand)
---------------------	---

Stand Adjustment	Adjustable in the range of 12° to 130°
------------------	--

Compatible Operating Systems	Windows 10 or above, Mac 10.9 or above or Chrome OS.
------------------------------	--

one captures.
one connects.
they're wonderful.

DOCUMENT CAMERA
wandercam pro

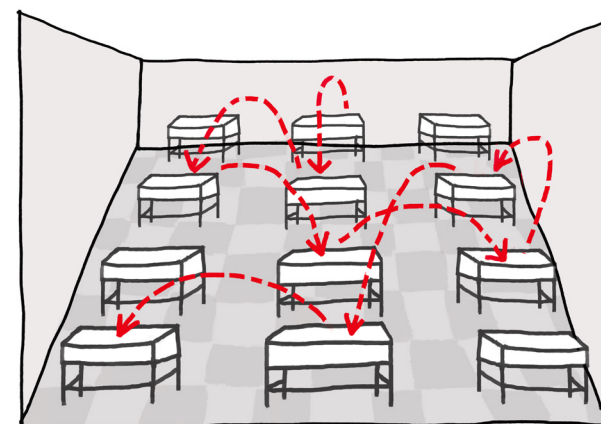
WIRELESS RECEIVER
qshare 20
Supports wireless HDMI connectivity—
eliminating the need for WiFi or a mess
of cables.

every hero
needs a sidekick.

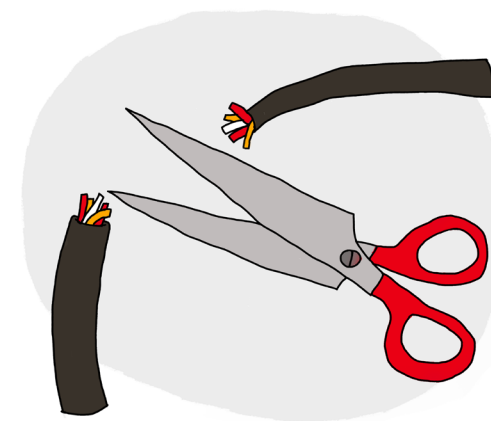
WanderCam Pro and QShare 20 are the perfect pair
for classroom freedom. One captures crystal-clear
images from anywhere in the room, while the other
handles the wireless connection—no cables, no WiFi
dependencies, no complications.



Learn more about the WanderCam Pro and the QShare20 at
qomo.com/wandercam-pro or scan the QR code.



cut the cord.
keep the connection.



CONNECT WIRELESSLY
desk-to-desk brilliance.

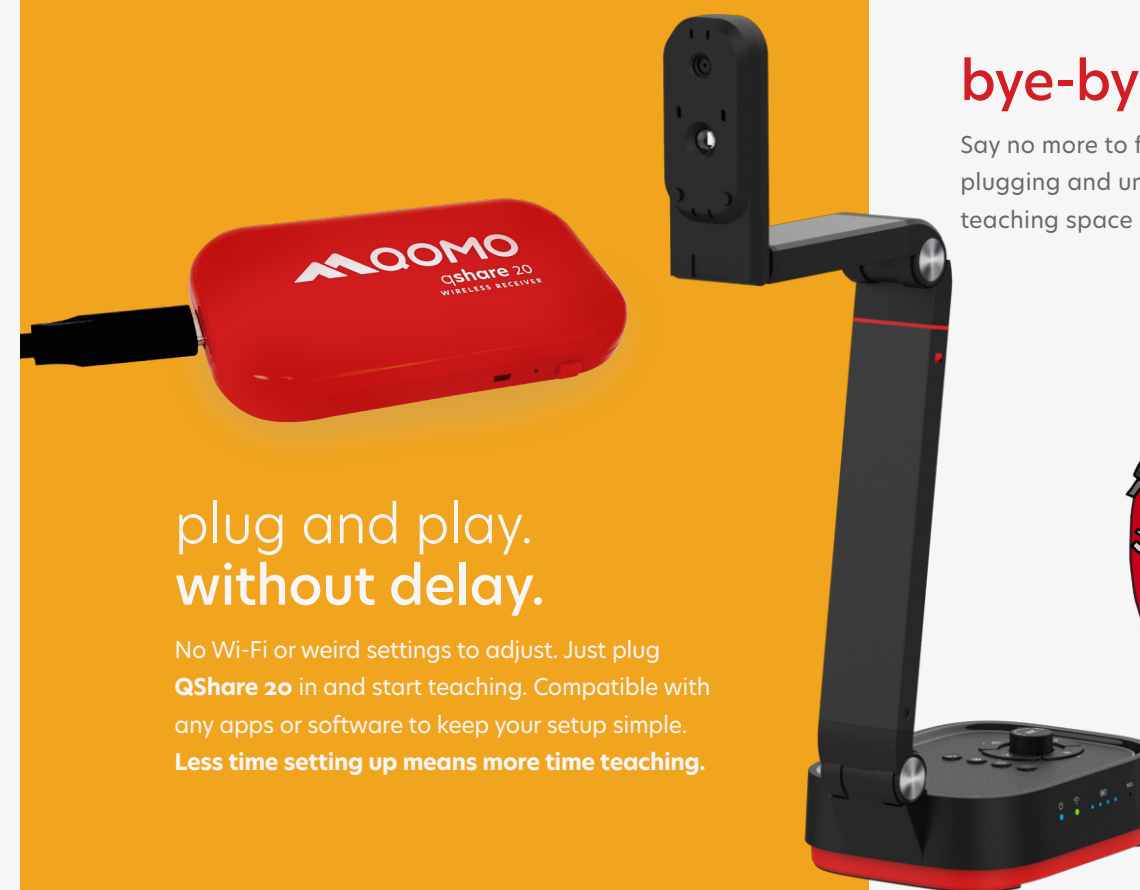
When WanderCam Pro and QShare 20 team up,
teachers can walk around freely, showing objects and
documents from anywhere in the room. **No more being
tethered to a single spot.**

FREEDOM TO MOVE

The WanderCam Pro experience gives you freedom to move
throughout the classroom with **wireless 4K imaging** that
follows you wherever you go.

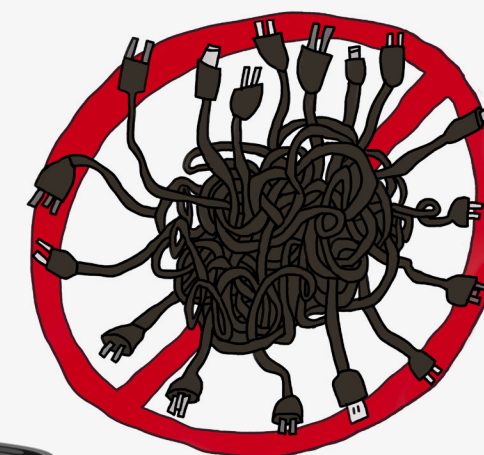
bye-bye messy cables.

Say no more to fighting with wires and constant
plugging and unplugging. A cleaner, more organized
teaching space lets everyone focus on what matters.



plug and play.
without delay.

No Wi-Fi or weird settings to adjust. Just plug
QShare 20 in and start teaching. Compatible with
any apps or software to keep your setup simple.
Less time setting up means more time teaching.



DOCUMENT CAMERA PRODUCT LINE OVERVIEW

share the delight that's in the details.

QOMO offers doc cams that flex, scan, and even fit in your pocket, so you can choose the camera that meets your specific classroom requirements.



qshare 20
wireless add-on



Wireless Cameras!

	scanner cam 5	scanner cam 22	scanner cam 100S	science cam 80 H3	center cam 3900 H2	center cam 5000	wander cam 55W	wander cam 100W
Model	QPC5	QPC22	QPC100S	QPC80 H3	QD3900 H2	QD5000	QPC55W	QPC100W
MP	13	8	13	8.3	5	8	8	13
Resolution	4K UHD	4K UHD	4K UHD	4K UHD	HD	4K UHD	4K UHD	4K UHD
Digital Zoom	25x	25x	25x	10x	10x	10x	25x	30x
Optical Zoom				10x	10x	10x		
Built-in mic & LED Lamps	✓ _c	✓	✓	✓	✓	✓	✓	✓
USB	✓	✓	✓	✓	✓	✓	✓	✓
HDMI			✓	✓	✓	✓		✓
RS232				✓	✓	✓		
Chrome, Windows, Mac, Android OS (USB Mode)	✓	✓	✓	✓	✓	✓	✓	✓
Wireless				Point-to-Point (Windows)		Point-to-Point (Windows)	Point-to-Point (Windows)	Wireless Network & Point-to-Point (Mac & Windows)
QShare 20 Compatible (Wireless USB & HDMI)				✓		✓		✓
Additional Features	USB C, Portable, Carrying Sleeve	Lightweight, Small Footprint	Extendable Neck	Microscope Adapter, Gooseneck	Dual Arm-lights & Backlight	Preview Screen, Dual Arm-lights & Backlight	Lightweight, Small Footprint	Extendable Neck

we make collaboration technology work the way you want it to.

QOMO is a leading US brand and global manufacturer of educational and collaboration technology. From doc cams to interactive touch screens, we're the only partner who comes with a fully-integrated (and adaptable) product line that's easy to use and easy on the budget. After doing this for more than 20 years, we understand how to work with everyone from CEOs and CTOs to district administrators and classroom teachers.

QOMO focuses on creating user-friendly technologies that allow everyone to enjoy what they do best.



How do you say our name?

QOMO [co-moe]

Tech Support: support@qomo.com

Sales Team: sales@qomo.com

hello@qomo.com
866-990-7666

46950 Magellan
Wixom, MI 48393

Q O M O . C O M