



Wireless Tablet

Hardware Quick Start Guide

English

The R&TTE Directive



We, the manufacturer hereby declare that this equipment, model RCK-T07 is in compliance with the essential requirements and other relevant provisions of Directive 1995/5/EC.

FEDERAL COMMUNICATIONS COMMISSION INTERFERENCE STATEMENT

This equipment has been tested and found to comply with the limits for a Class B digital device, pursuant to part 15 of the FCC Rules. These limits are designed to provide reasonable protection against harmful interference in a residential installation. This equipment generates, uses and can radiate radio frequency energy and, if not installed and used in accordance with the instructions, may cause harmful interference to radio communications. However, there is no guarantee that interference will not occur in a particular installation. If this equipment does cause harmful interference to radio or television reception, which can be determined by turning the equipment off and on, the user is encouraged to try to correct the interference by one or more of the following measures:

- Reorient or relocate the receiving antenna.
- Increase the separation between the equipment and receiver.
- Connect the equipment into an outlet on a circuit different from that to which the receiver is connected.
- Consult the dealer or an experienced radio/ TV technician for help.

CAUTION:

Any changes or modifications not expressly approved by the grantee of this device could void the user's authority to operate the equipment.

RF exposure warning

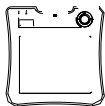
The equipment complies with FCC RF exposure limits set forth for an uncontrolled environment.

The equipment must not be co-located or operating in conjunction with any other antenna or transmitter.

Congratulation on your Wireless Tablet purchase

This Wireless Tablet is a 2.4 GHz wireless solution without the need for complicated software installation. Simply connect the wireless receiver dongle to your compatible computer and start using your wireless tablet right away. You can also install the tablet drivers for additional hot key functionality.

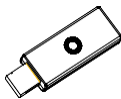
1. Package content



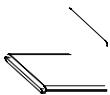
▲ Tablet *1



▲ Pen*1



▲ Receiver dongle*1



▲ Li-ion battery *1



▲ Pen tip*2



▲ Pen tweezers*1



▲ CD*2



▲ Quick guide*1

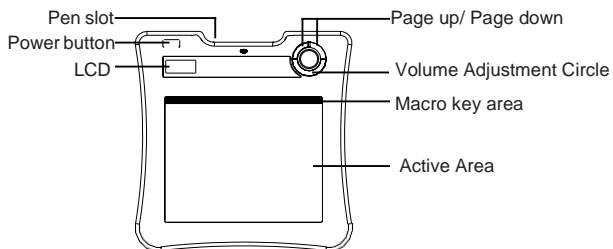


▲ Application manual*1

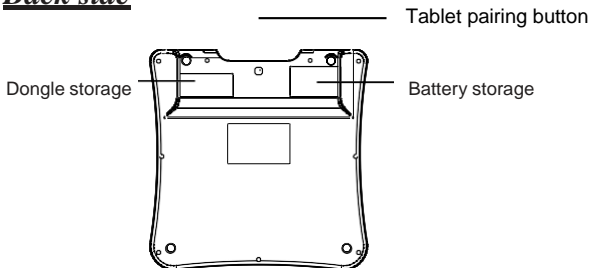
2. Hardware

Tablet:

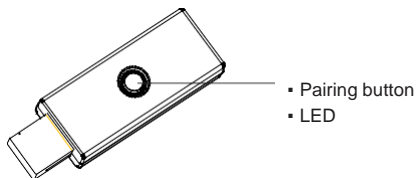
Front side



Back side

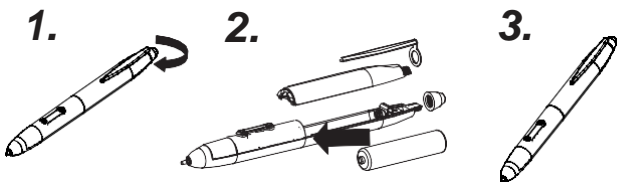


Receiver Dongle

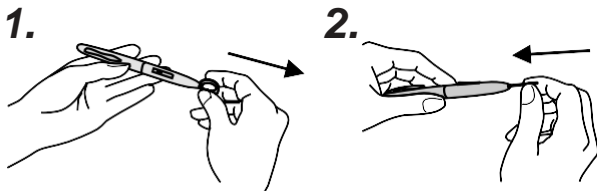


Pen

How to change the pen battery




How to change pen tip





3. LCD Icons



 **Power on:** Press and hold the power button for 3 seconds for the device to power on and the icon to appear.

 **Battery Indicator:** Icon shows battery charge level (1-4) when device is powered on.

 **Active:** Icon appears when the tablet is active. If the pen is outside the tablet active area for 3 seconds, it will enter power saving mode and the icon will disappear.

 **Connection:** Icon appears after the tablet and wireless dongle have been successfully paired.

 **Communication:** Icon will appear each time your tablet sends a communication signal to the wireless dongle.



Pen Interaction:

- Flashing: Pen is within the detectable active area.
- Still: Pen tip on the active area surface.

-<--->+ Volume adjustment: Use the pen tip to adjust the volume.

- **-->+** Clockwise: adjust volume up
- **--<** Counterclockwise: adjust volume down

00 | Tablet number: Displays the assigned tablet number once the tablet and wireless dongle are paired.

4. Installation

- **Windows 7/8/10**

The Wireless Tablet is a Windows 7/8/10 Plug-and-Play device for basic tablet function, page up/down control, and volume adjustment. You can install the Macro Key Manager drivers on your computer for additional hot key functionality.

5. Quick Start

1. Plug the receiver dongle into your computer.
2. Press and hold the power button for at least 3 seconds to power on the tablet.
3. Press the pairing buttons located on the back side of the tablet and on the receiver dongle at the same time.
4. Observe that both the tablet LCD and the blue LED light on the receiver dongle flash to confirm pairing.
5. Check that the information on the LCD indicator is displaying correctly and the LCD is showing the assigned tablet number, starting with 001.
6. The wireless pen is designed with power saving technology. Tap the pen tip within the active area to wake up the pen and begin using the tablet.

6. Specifications

Solution	Wireless 2.4GHz RF
Dimension	278*282*20mm
active area	7.84"*5.92"
Resolution	2000lpi
Report rate	120 rpst
Pen pressure	1024 levels
Macro key	16(top of active area)
Hot key	Page up / page down
LCD type	TN LCD
LCD size	17.7*40.9mm
LCD Icon content	battery status – 4 levels; charged; / connection mode ; connection power status/ volume status /Tablet number
Battery type	Nokia BL5C Li-ion rechargeable battery
battery capacity	800mA
battery life	16 hrs continuing mode
power source	USB charged
power button	electrical power button
power consumption	max 50 mA(operation mode)
Receiver dongle	Yes