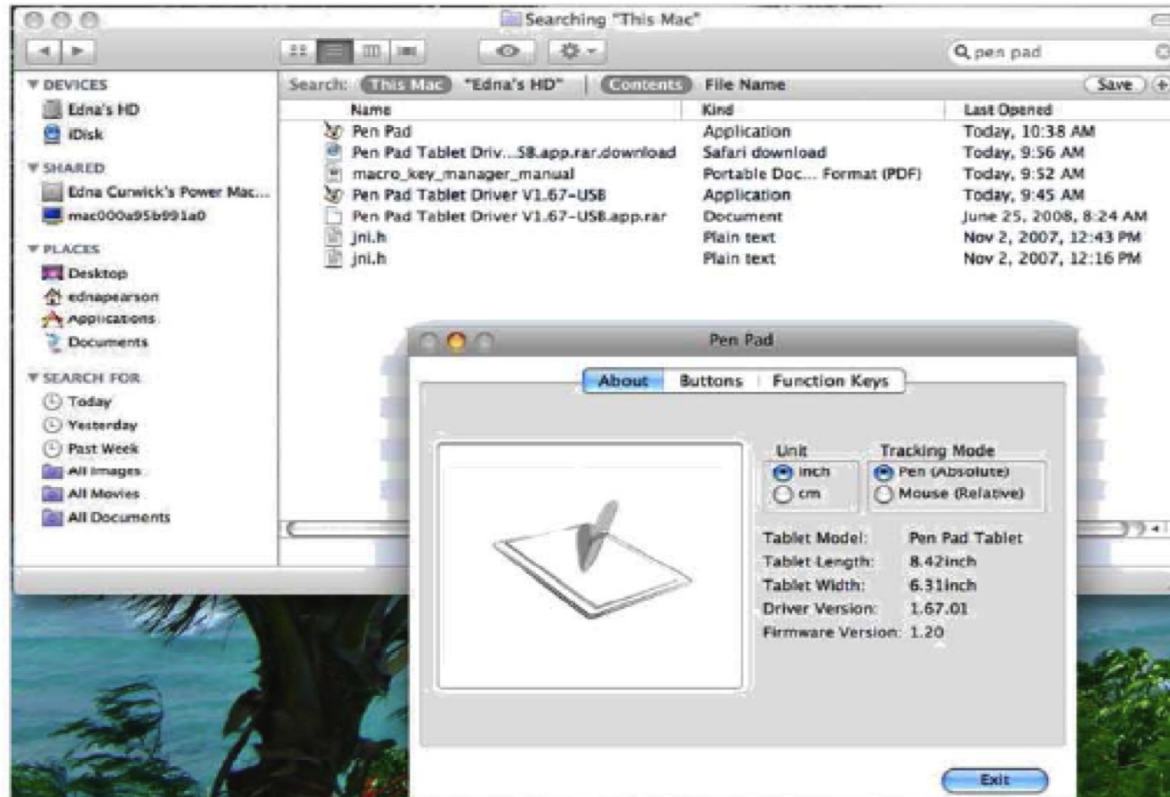


QOMO Pen Pad Installation Instructions





Instructions for loading Mac Driver

- You will need to load the driver from the Black CD – this is the one that contains the Pen Pad Manager.

Navigating to Your Pen Pad Software

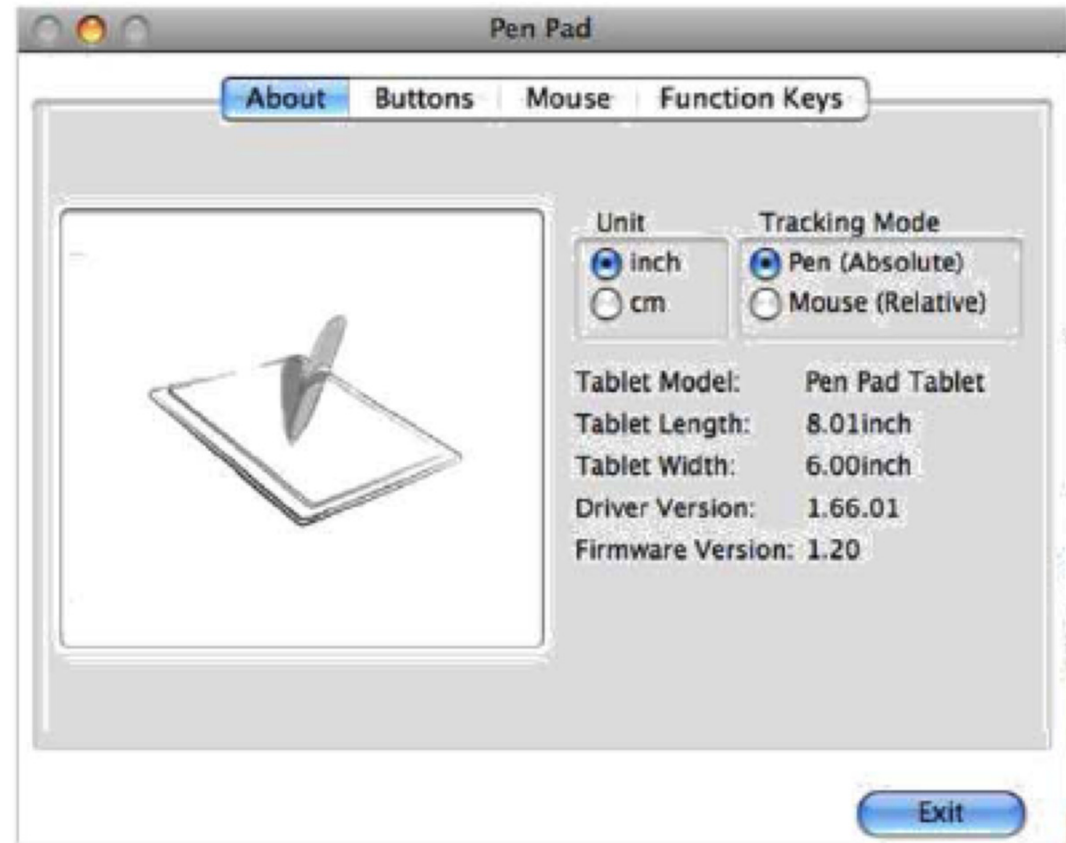
- Click on your hard drive to access your application menu



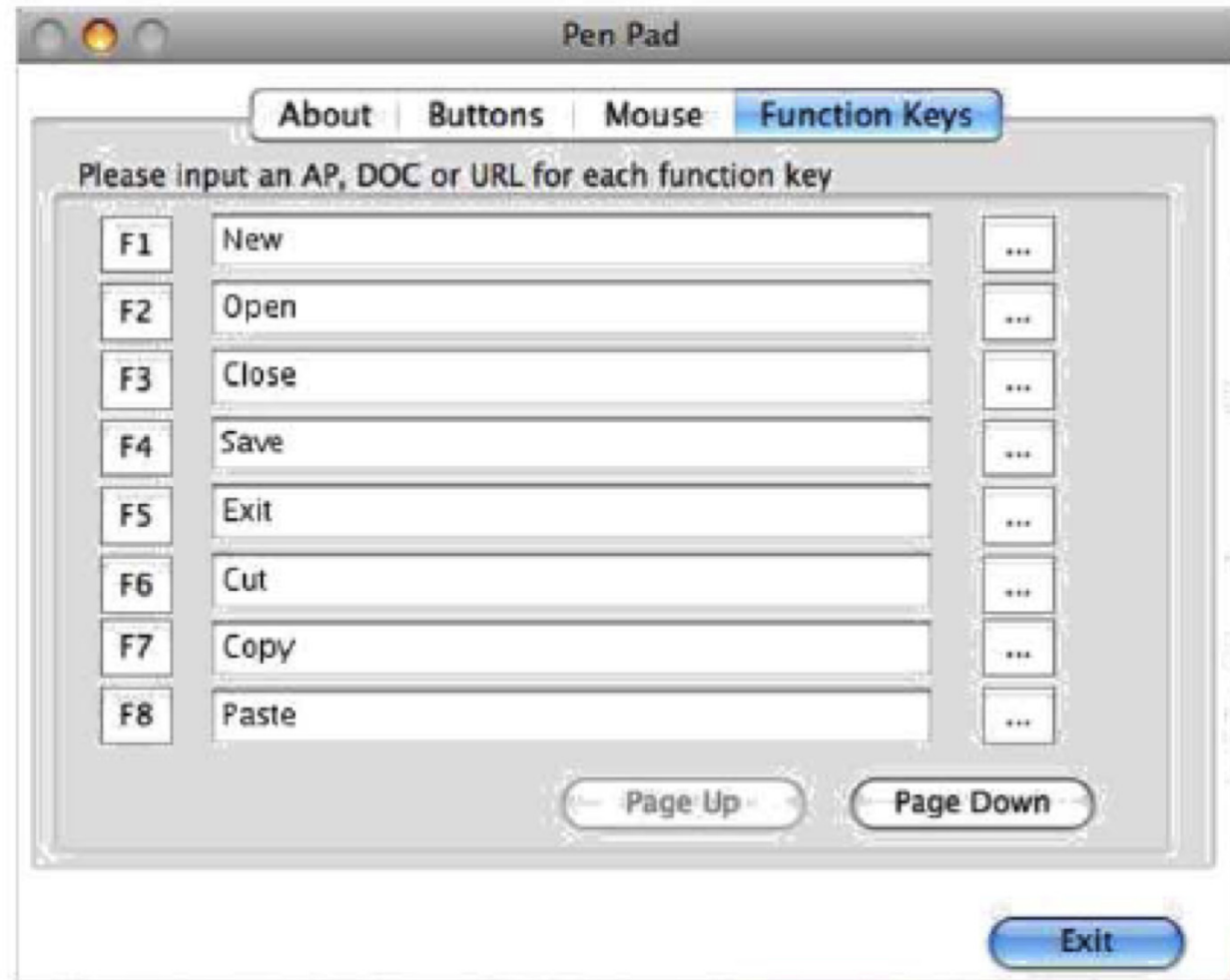
- Scroll through applications and find “Pen Pad”. You can also drag this down into your dock. This is where you control the “Hot Keys” (PC)



- The ***about*** tab lets you change the units and the tracking mode on the tablet. It is best to keep it in pen mode for more accurate use



- These are the default keys for the Pen Pad



- You can also create your own by clicking and resetting the keys





- Take time to go through the Pen Pad function keys and reset them to ones that have meaning for you.
- Practice clicking from one program to another —making sure the keys have loaded correctly.