



## **Pen Pad Macro/Function Key Installation for Macs**

This guide will provide you with information on how to open your Pen Pad program and access your Macro Keys (AKA Function Keys).

© Copyright 2008 QOMO HiteVision, LLC. All Rights Reserved.

Flow! Works Software is a registered trademark of QOMO HiteVision.

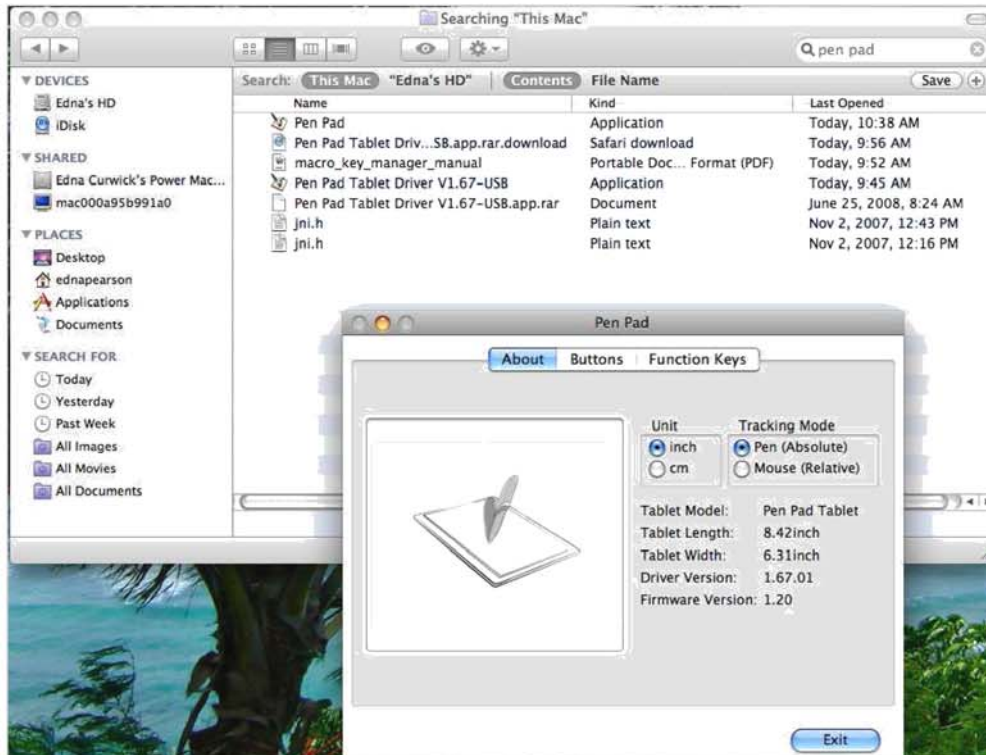
The information contained herein is subject to change without notice. The only warranties for QOMO Products and services are set forth in the express warranty statements accompanying such products and services. Nothing herein should be construed as constituting an additional warranty. QOMO shall not be liable for technical or editorial errors or omissions contained herein.

## Installation Instructions



Note: In Macintosh, the Macro Key Manager installs as Pen Pad, but is found under the Macro Key Manager heading in Windows.

1. Insert the black, Mac disc.
2. Install the USB Driver.
3. Connect the hardware (USB dongle from your Wireless Tablet).
4. Install the Pen Pad software (for Mac users).  
Note: If you have Windows, install Macro Key Manager off of the black, Vista disc (compatible with XP as well).



Note: In the event your software will not install from the CD, please contact our technical support department for additional assistance at [support@qomo.com](mailto:support@qomo.com).

## Navigating to your Pen Pad Software

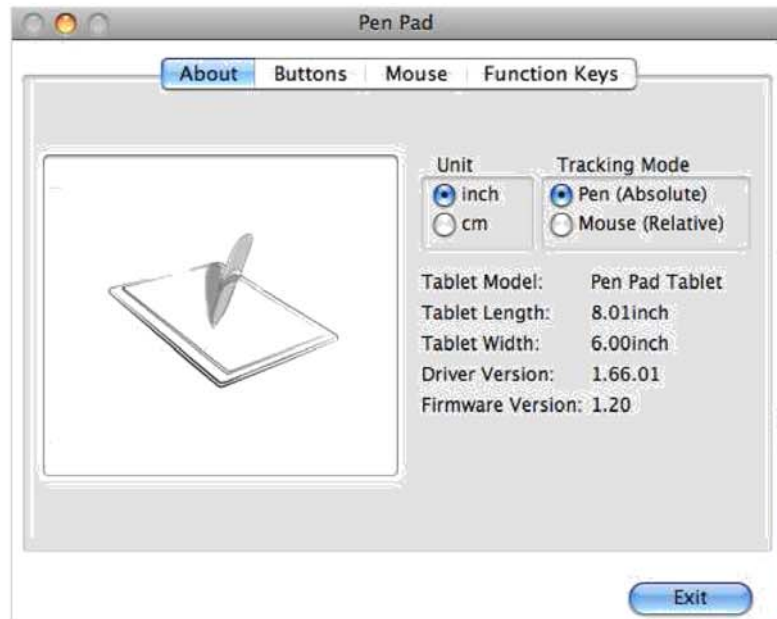
1. Once you have downloaded your Pen Pad software, you can locate the program on your Mac by clicking on your Macintosh HD on your desktop:



2. Scroll through Applications until you reach Pen Pad.



3. Make sure your wireless tablet USB dongle is plugged into your Mac prior to launching the Pen Pad software. Once launched, you will see the Pen Pad About screen:



4. Navigate over to the Function Keys tab:

